

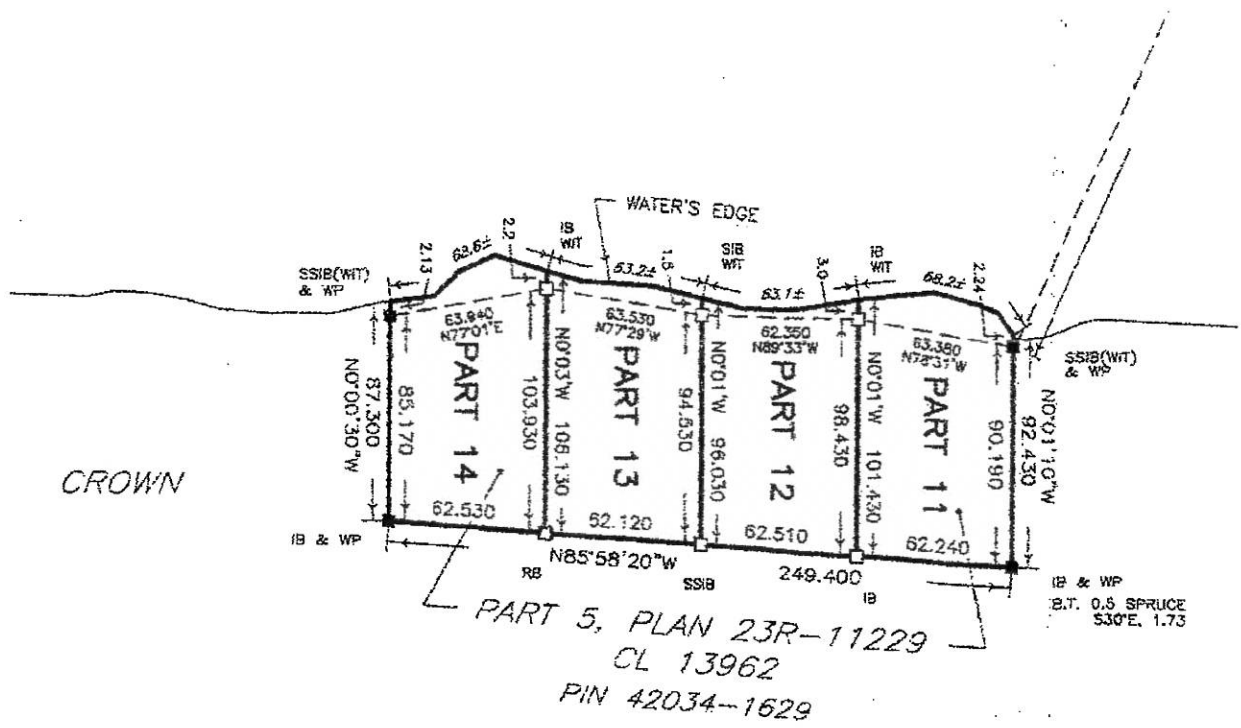
LOCATION FIVE – SITES 11 TO 14 Parts 11 to 14, 55R-11661

SITE 11	This site is identified as Part 11 on 55R-11661.
Land Area:	1.591 acres (0.644 hectares)
Lakeshore Frontage:	223.75 ± feet (68.20 ± metres)
Site Width:	204.20 ± feet (62.24 ± metres)
SITE 12	This site is identified as Part 12 on 55R-11661.
Land Area:	1.499 acres (0.607 hectares)
Lakeshore Frontage:	207.02 ± feet (63.1 ± metres)
Site Width:	205.09 ± feet (62.51 ± metres)
SITE 13	This site is identified as Part 13 on 55R-11661.
Land Area:	1.547 acres (0.626 hectares)
Lakeshore Frontage:	207.35 ± feet (63.20 ± metres)
Site Width:	203.81 ± metres (62.12 ± metres)
SITE 14	This site is identified as Part 14 on 55R-11661.
Land Area:	1.535 acres (0.621 hectares)
Lakeshore Frontage:	225.72 ± feet (68.80 ± metres)
Site Width:	205.15 ± metres (62.53 ± metres)

GENERAL PHYSICAL CONDITIONS FOR ALL FOUR LOTS

Shape and Situation:	With irregular shape, these site lie along the south shore of the lake, with a northern exposure.
Topography & Surface Cover:	The shoreline is low lying, with a modest rise inland. The site is covered with dense growth of brush and trees. Dense growth at the shoreline.
Shoreline:	Mixing lower areas of wet soils with a few areas of rock and stone and cobble.

REPRODUCTION FROM PLAN 23R-11661 – SHOWING PARTS 11 THROUGH 14 AT LOCATION FIVE



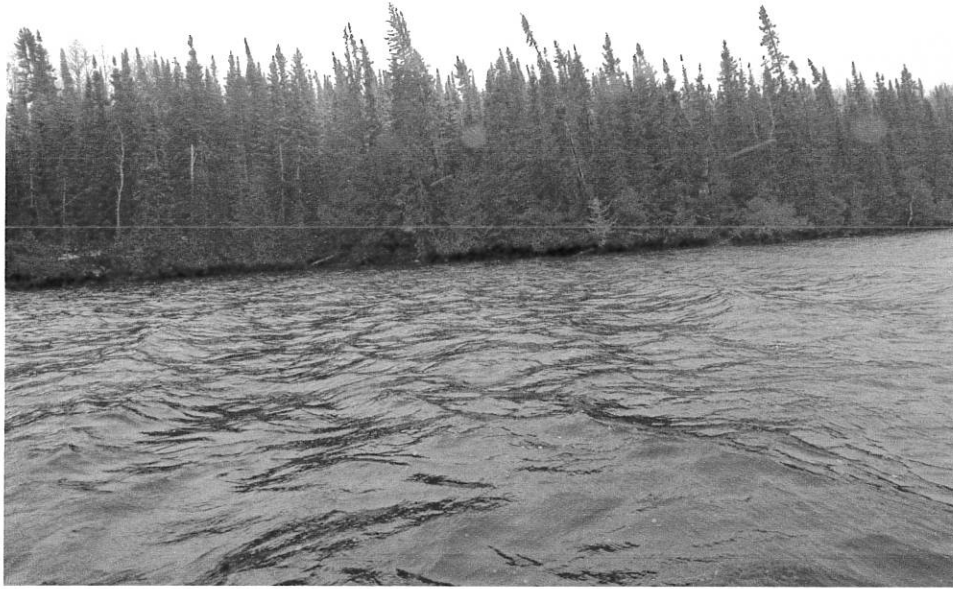
PHOTOGRAPHS OF LOCATION FIVE - PARTS 11 THROUGH 14, 23R-11661



VIEWS OF THE SHORELINE



PHOTOGRAPHS OF LOCATION FIVE - PARTS 11 THROUGH 14, 23R-11661



VIEWS OF THE SHORELINE

