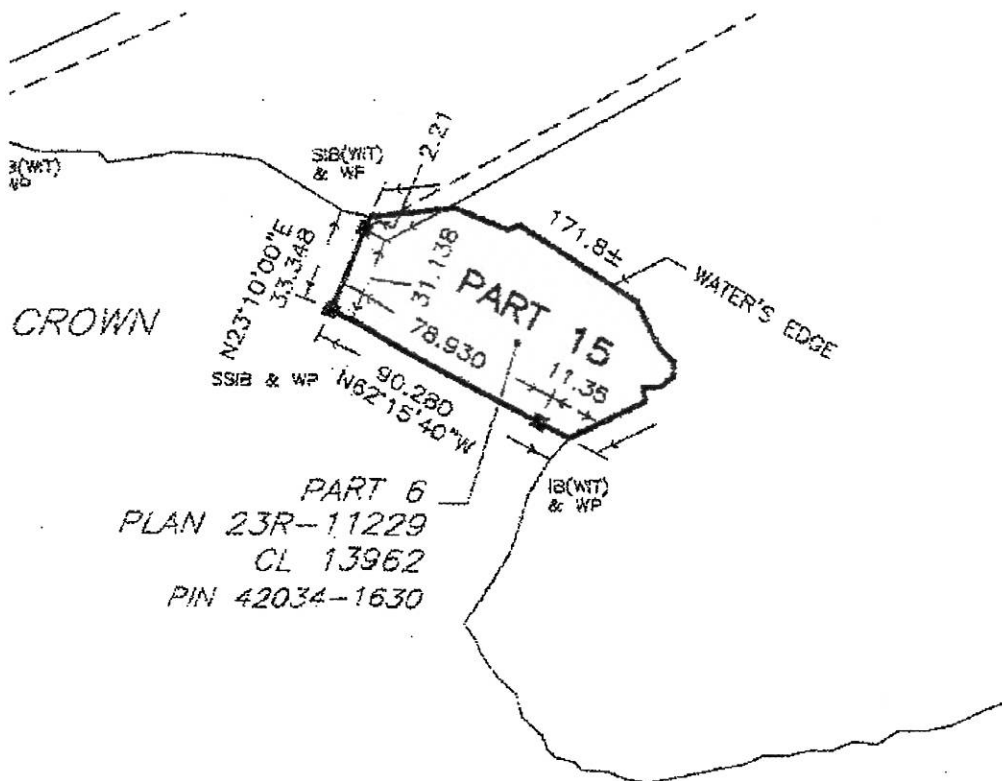


LOCATION SIX - SITE 15

SITE 15	This site is identified as Part 15 on 55R-11661.
Land Area:	1.265 acres (0.512 hectares)
Lakeshore Frontage:	563.65 ± feet (171.8 ± metres)
Site Width:	296.19 ± metres (90.28 ± feet)
Shape and Situation:	With irregular shape, this site encompasses a small point of land that protrudes from the south shore of the lake. With north and easterly exposure it is somewhat sheltered from open lake conditions.
Topography & Surface Cover:	The shoreline is low lying, with a modest rise inland. The site is covered with dense growth of brush and trees. Dense growth at the shoreline.
Shoreline:	Mixing lower areas of wet soils with a few areas of rock and stone and cobble. Notable presence of rock on the point of land.



PHOTOGRAPHS OF LOCATION SIX - PART 15, 23R-11661



VIEWS OF THE SHORELINE



PHOTOGRAPHS OF LOCATION SIX - PART 15, 23R-11661



VIEWS OF THE SHORELINE

