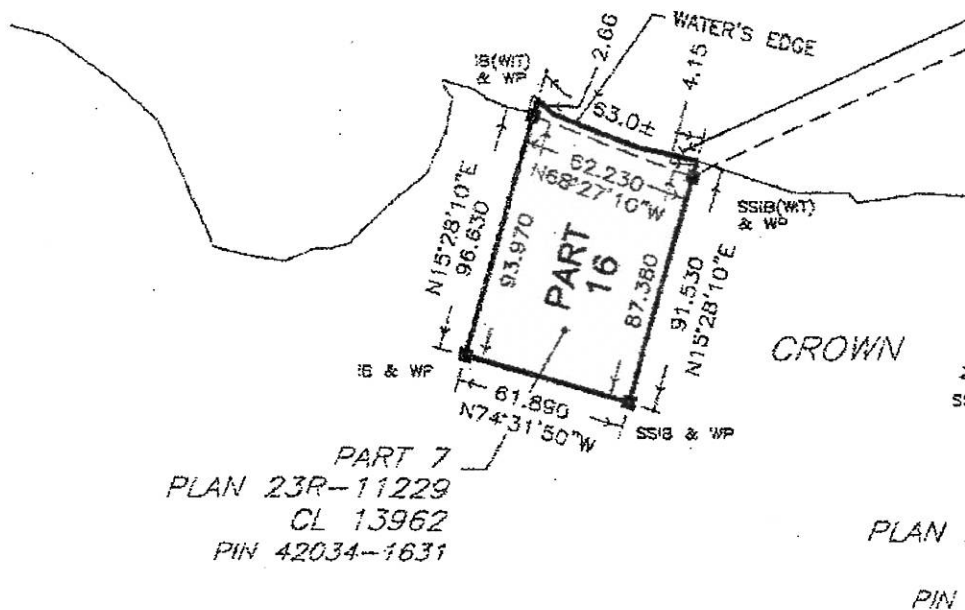
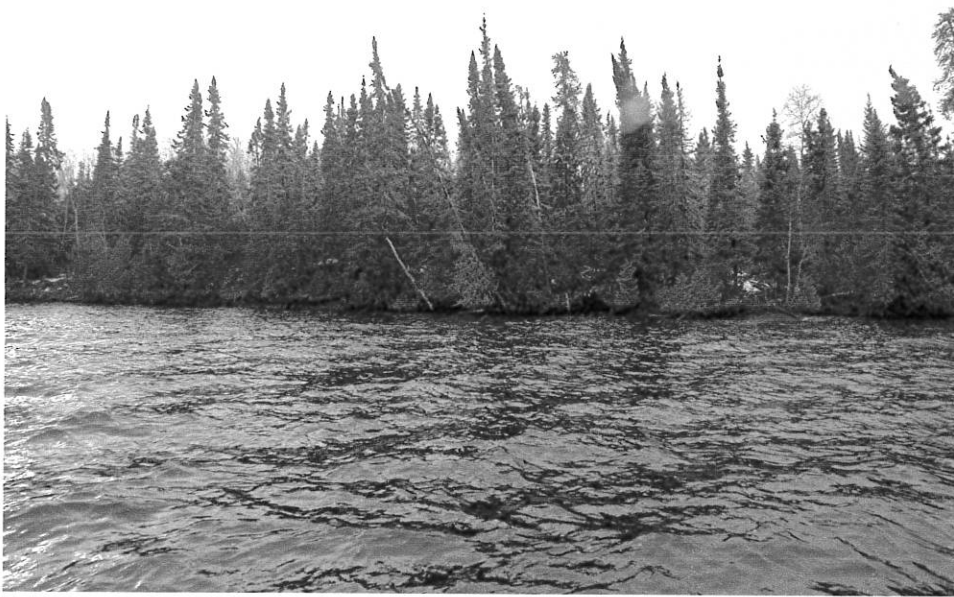


LOCATION SEVEN - SITE 16

SITE 16	This site is identified as Part 16 on 55R-11661.
Land Area:	1.40 acres 0.567 hectares)
Lakeshore Frontage:	206.69 feet (63.00 metres)
Property Width:	203.05 feet (61.89 metres)
Shape and Situation:	With irregular shape, this site lies along the south shore of the lake, with a northern exposure.
Topography & Surface Cover:	The shoreline is low lying, with a modest rise inland. The site is covered with dense growth of brush and trees. Dense growth at the shoreline.
Shoreline:	Mixing lower areas of wet soils with a few areas of rock and stone and cobble.



PHOTOGRAPHS OF LOCATION SEVEN - PART 16, 23R-11661



VIEWS OF THE SHORELINE

