

**LOCATION EIGHT – SITES 17 TO 19** Parts 17 to 19, 55R-11661

**SITE 17** This site is identified as Part 17 on 55R-11661.  
 Land Area: 1.604 acres (0.649 hectares)  
 Lakeshore Frontage: 233.92 ± feet (71.30 ± metres)  
 Site Width: 203.87 ± feet (62.14 ± metres)

**SITE 18** This site is identified as Part 18 on 55R-11661.  
 Land Area: 1.91 acres (0.773 hectares)  
 Lakeshore Frontage: 207.35 ± feet (63.2 ± metres)  
 Site Width: 203.81 ± feet (62.12 ± metres)

**SITE 19** This site is identified as Part 19 on 55R-11661.  
 Land Area: 1.729 acres (0.700 hectares)  
 Lakeshore Frontage: 229.00 ± feet (69.8 ± metres)  
 Site Width: 203.84 ± metres (62.13 ± metres)

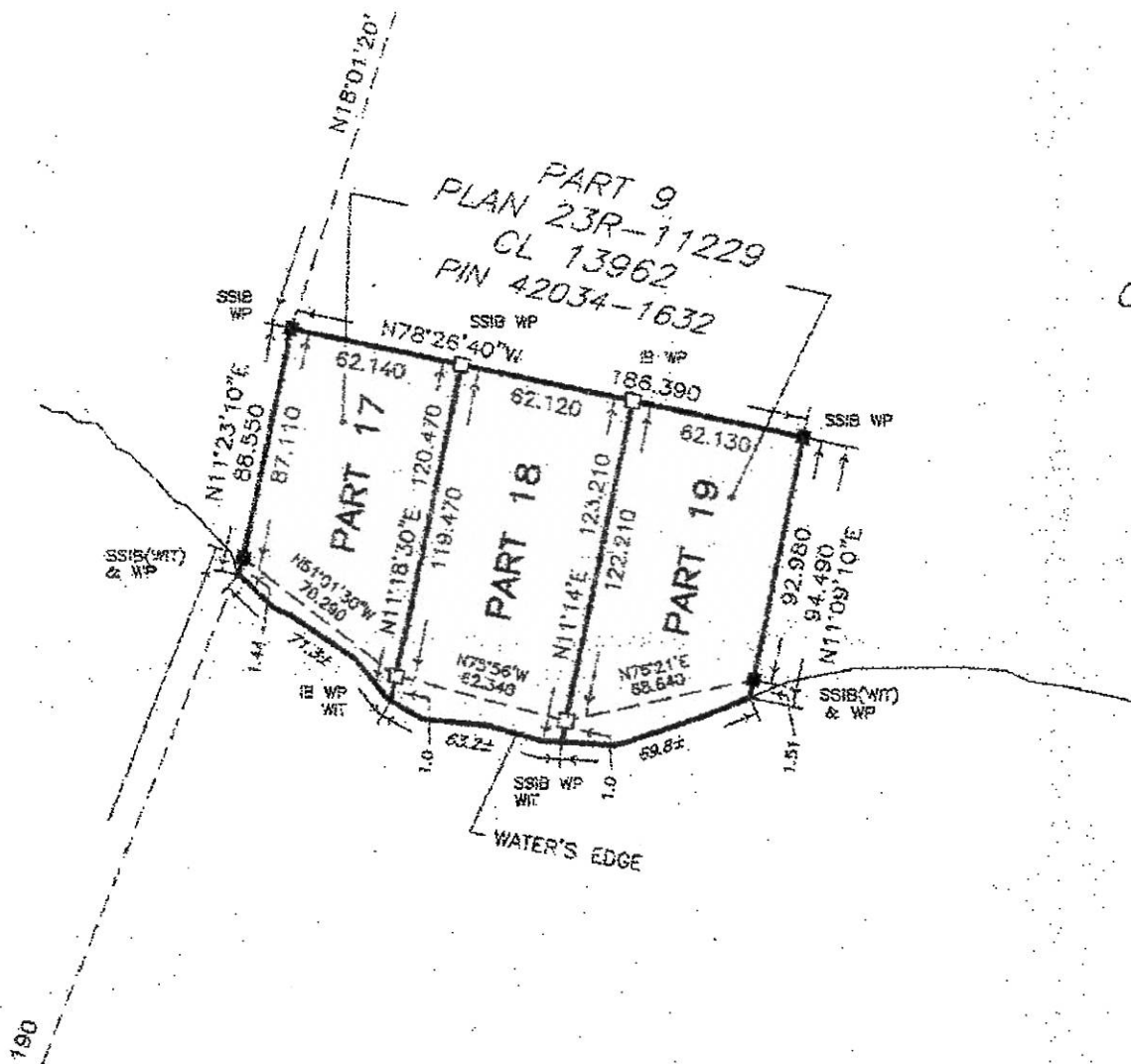
**GENERAL PHYSICAL CONDITIONS FOR ALL THREE LOTS**

Shape and Situation: With irregular shape, this site lies along the south shore of the lake, with a ~~northern~~ exposure.

Topography & Surface Cover: The shoreline is low lying, with a modest rise inland. The site is covered with dense growth of brush and trees

Shoreline: Mixing lower areas of wet soils with a few areas of rock and stone and cobble.

REPRODUCTION FROM PLAN 23R-11661 – SHOWING PARTS 17 THROUGH 19 AT LOCATION EIGHT



## PHOTOGRAPHS OF LOCATION EIGHT - PARTS 17 THROUGH 19, 23R-11661



**VIEWS OF THE SHORELINE**



## PHOTOGRAPHS OF LOCATION EIGHT - PARTS 17 THROUGH 19, 23R-11661



**VIEWS OF THE SHORELINE**

