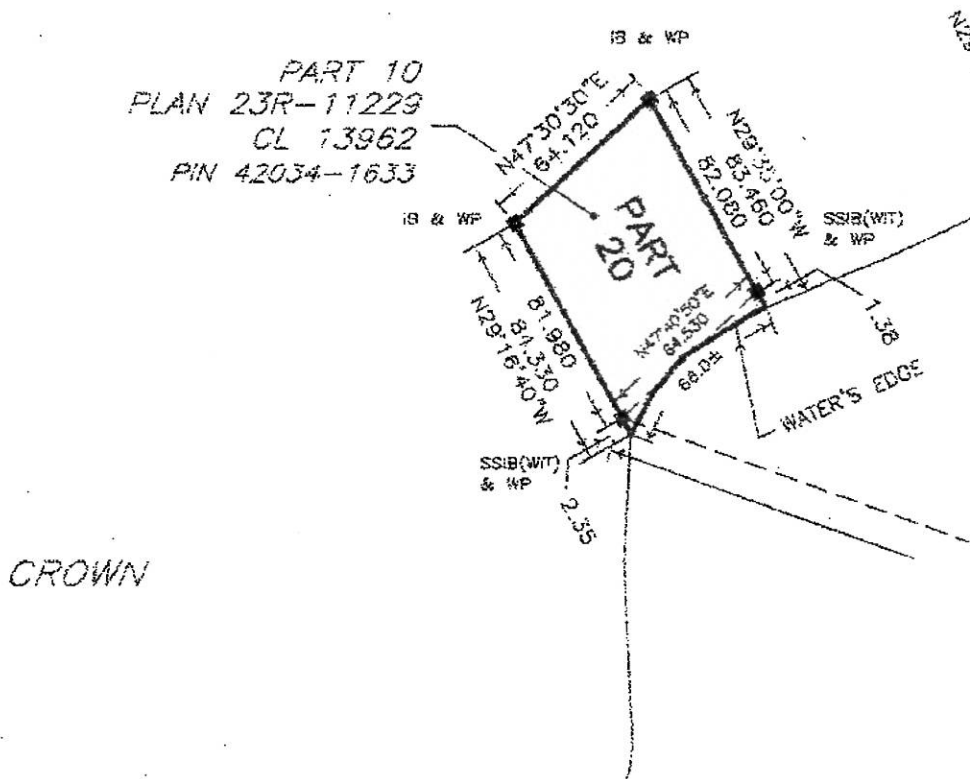


LOCATION NINE - SITE 20

SITE 20	This site is identified as Part 20 on 55R-11661.
Land Area:	1.231 hectares (0.498 acres)
Lakeshore Frontage:	216.54 ± feet (66.0 ± metres)
Property Width:	210.37 ± feet (64.12 ± metres)
Shape and Situation:	With irregular shape, this site lies along the north shore of the lake, with a south-eastern exposure.
Topography & Surface Cover:	The shoreline is low lying, with a modest rise inland. The site is covered with dense growth of brush and trees. Dense growth at the shoreline.
Shoreline:	Mixing lower areas of wet soils with a few areas of rock and stone and cobble.



PHOTOGRAPHS OF LOCATION NINE – PART 20, 23R-11661



VIEWS OF THE SHORELINE



PHOTOGRAPHS OF LOCATION NINE – PART 20, 23R-11661



VIEWS OF THE SHORELINE