

**LOCATION ELEVEN – SITES 25 TO 28**

Parts 25 to 28, 55R-11661

**SITE 25**

This site is identified as Part 25 on 55R-11661.

Land Area:

1381 acres (0.559 hectares)

Lakeshore Frontage:

267.39 ± feet (81.50 ± metres)

Site Width:

202.43 ± feet (61.70 ± metres)

**SITE 26**

This site is identified as Part 26 on 55R-11661.

Land Area:

1.208 acres (0.489 hectares)

Lakeshore Frontage:

206.36 ± feet (62.90 + metres)

Site Width:

202.53 ± feet (61.73 + metres)

**SITE 27**

This site is identified as Part 27 on 55R-11661.

Land Area:

1.378 acres (0.558 hectares)

Lakeshore Frontage:

217.85 ± feet (66.4 + metres)

Site Width:

202.20 ± feet (61.63 + metres)

**SITE 28**

This site is identified as Part 28 on 55R-11661.

Land Area:

1.263 acres (0.511 hectares)

Lakeshore Frontage:

198.16 ± feet (60.40 + metres)

Site Width:

202.20 ± metres (61.63 + metres)

**GENERAL PHYSICAL CONDITIONS FOR ALL FOUR LOTS**

Shape and Situation:

With irregular shape, this site lies along the west shore of a bay along the north shore of the lake, with an eastern exposure, sheltered from open lake conditions.

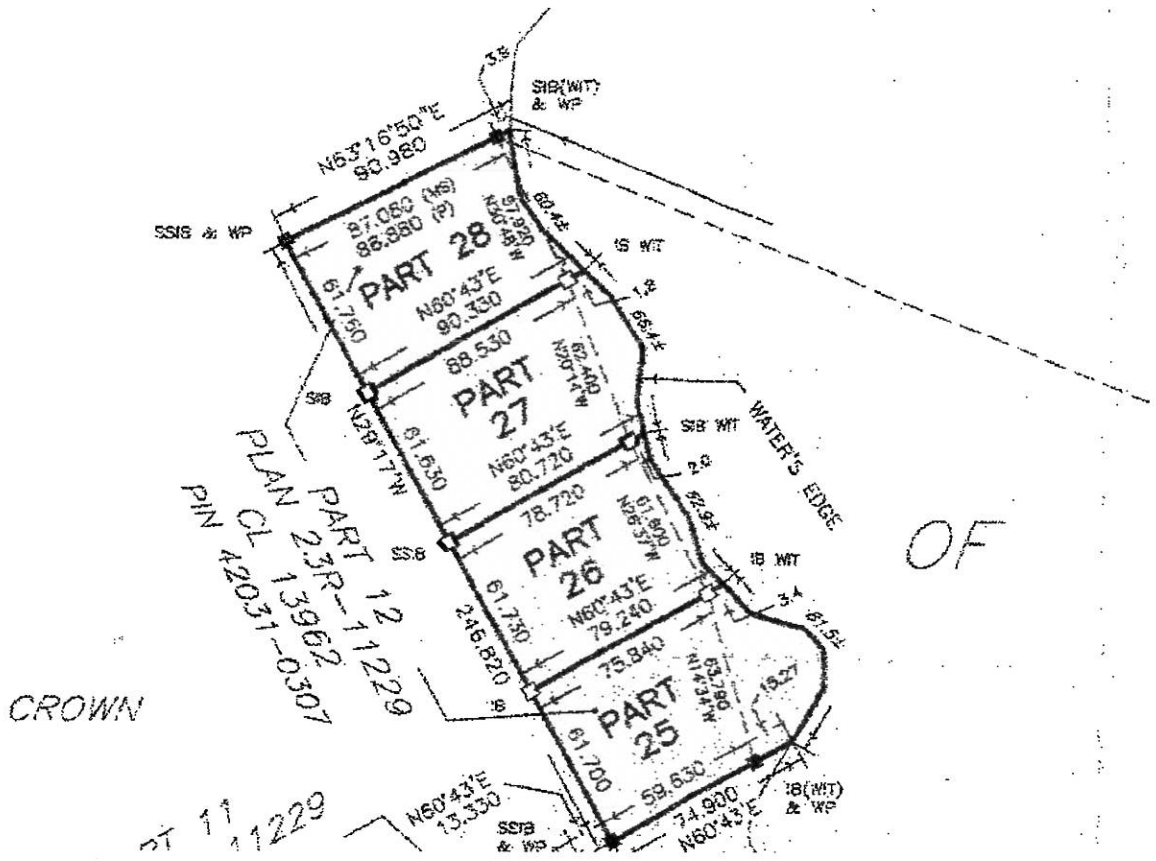
Topography & Surface Cover:

The shoreline is low lying, with a rise inland. The site is covered with dense growth of brush and trees – notably along the shoreline.

Shoreline:

Mixing lower areas of wet soils with a few areas of rock and stone and cobble.

REPRODUCTION FROM PLAN 23R-11661 – SHOWING PARTS 25 THROUGH 28 AT LOCATION ELEVEN



## PHOTOGRAPHS OF LOCATION ELEVEN - PARTS 25 THROUGH 28, 23R-11661



**VIEWS OF THE SHORELINE**



## PHOTOGRAPHS OF LOCATION ELEVEN - PARTS 25 THROUGH 28, 23R-11661



**VIEWS OF THE SHORELINE**

