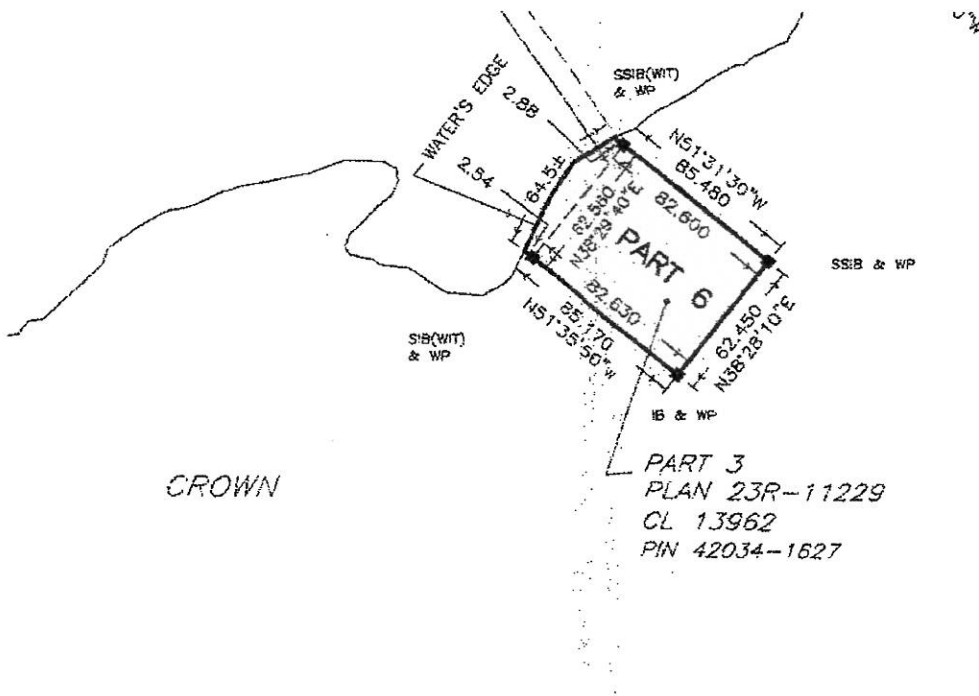


LOCATION THREE - SITE 6

SITE 6	This site is identified as Part 6 on 55R-11661.
Land Area:	1.1.381 acres (0.559 hectares)
Lakeshore Frontage:	211.61 ± feet (64.5 ± metres)
Site Width:	204.89 ± metres (62.45 ± feet)
Shape and Situation:	With irregular shape, this site lies along the side of a small bay on south shore of the lake, with exposure to the length of the lake.
Topography & Surface Cover:	The shoreline is low lying, with no significant rise noted inland. The site is covered with dense growth of brush and trees. Dense growth at the shoreline.
Shoreline:	Mixing lower areas of wet soils with some areas of rock, stone and cobble.



PHOTOGRAPHS OF LOCATION THREE AND SITE 6 - PART 6, 23R-11661



VIEWS OF THE SHORELINE



PHOTOGRAPHS OF LOCATION THREE AND SITE 6 - PART 6, 23R-11661



VIEWS OF THE SHORELINE