

**LOCATION FOUR – SITES 7 TO 10** Parts 7 to 10, 55R-11661

**SITE 7** This site is identified as Part 7 on 55R-11661.  
 Land Area: 1.46 acres (0.591 hectares)  
 Lakeshore Frontage: 207.02 ± feet (63.10 ± metres)  
 Site Width: 206.20 ± feet (62.85 ± metres)

**SITE 8** This site is identified as Part 8 on 55R-11661.  
 Land Area: 1.47 acres (0.595 hectares)  
 Lakeshore Frontage: 207.35 ± feet (63.2 ± metres)  
 Site Width: 205.77 ± feet (62.72 ± metres)

**SITE 9** This site is identified as Part 9 on 55R-11661.  
 Land Area: 1.451 acres (0.587 hectares)  
 Lakeshore Frontage: 217.85 ± feet (66.40 ± metres)  
 Site Width: 205.84 ± metres (62.74 ± metres)

**SITE 10** This site is identified as Part 10 on 55R-11661.  
 Land Area: 1.413 acres (0.572 hectares)  
 Lakeshore Frontage: 214.57 ± feet (65.40 ± metres)  
 Site Width: 205.81 ± metres (62.73 ± metres)

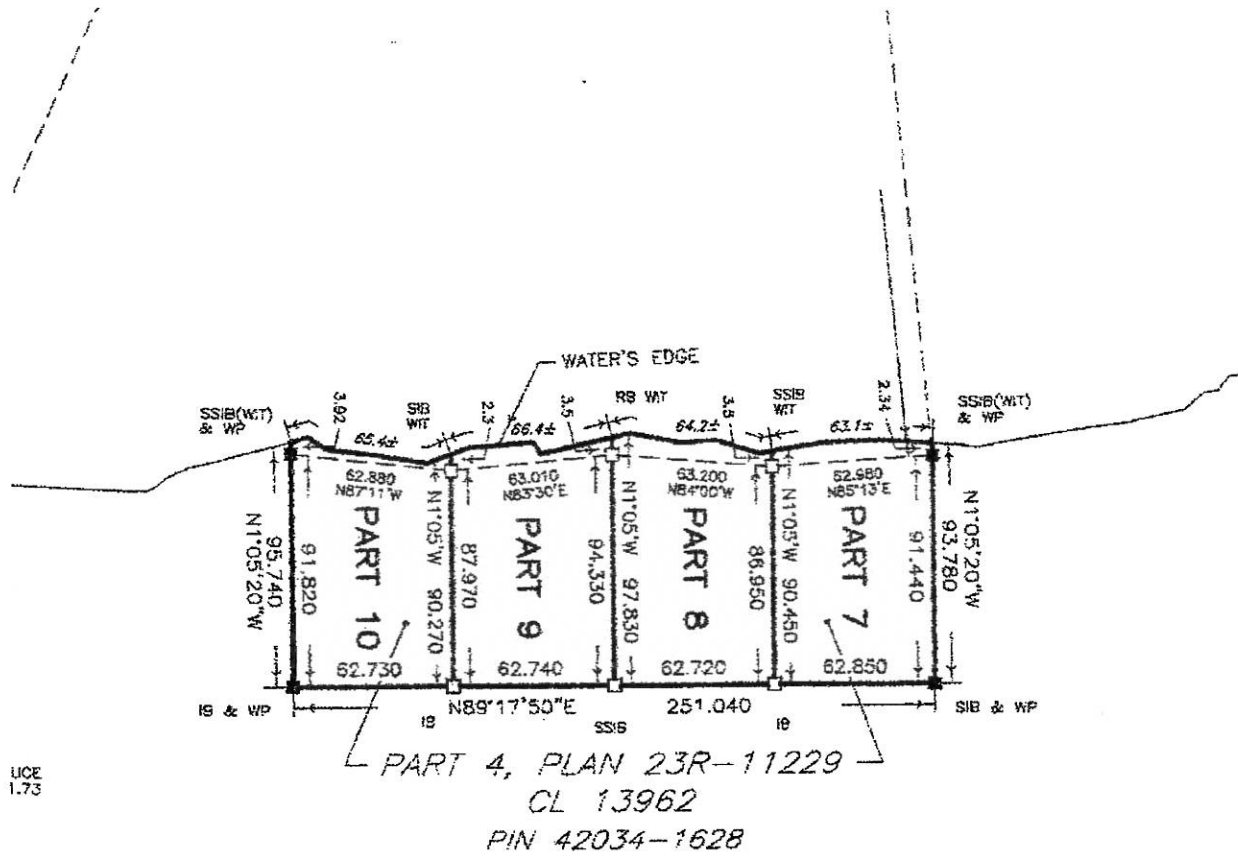
**GENERAL PHYSICAL CONDITIONS FOR ALL FOUR LOTS**

Shape and Situation: With irregular shape, these sites lie along the south shore of the lake, with a northern exposure.

Topography & Surface Cover: The shoreline is low lying, with a modest rise inland. The site is covered with dense growth of brush and trees. Dense growth at the shoreline.

Shoreline: Mixing lower areas of wet soils with a few areas of rock and stone and cobble.

### REPRODUCTION FROM PLAN 23R-11661 – SHOWING PARTS 7 THROUGH 10 AT LOCATION FOUR



## PHOTOGRAPHS OF LOCATION FOUR - PARTS 7 THROUGH 10, 23R-11661



**VIEWS OF THE SHORELINE**



## PHOTOGRAPHS OF LOCATION FOUR - PARTS 7 THROUGH 10, 23R-11661



**VIEWS OF THE SHORELINE**

