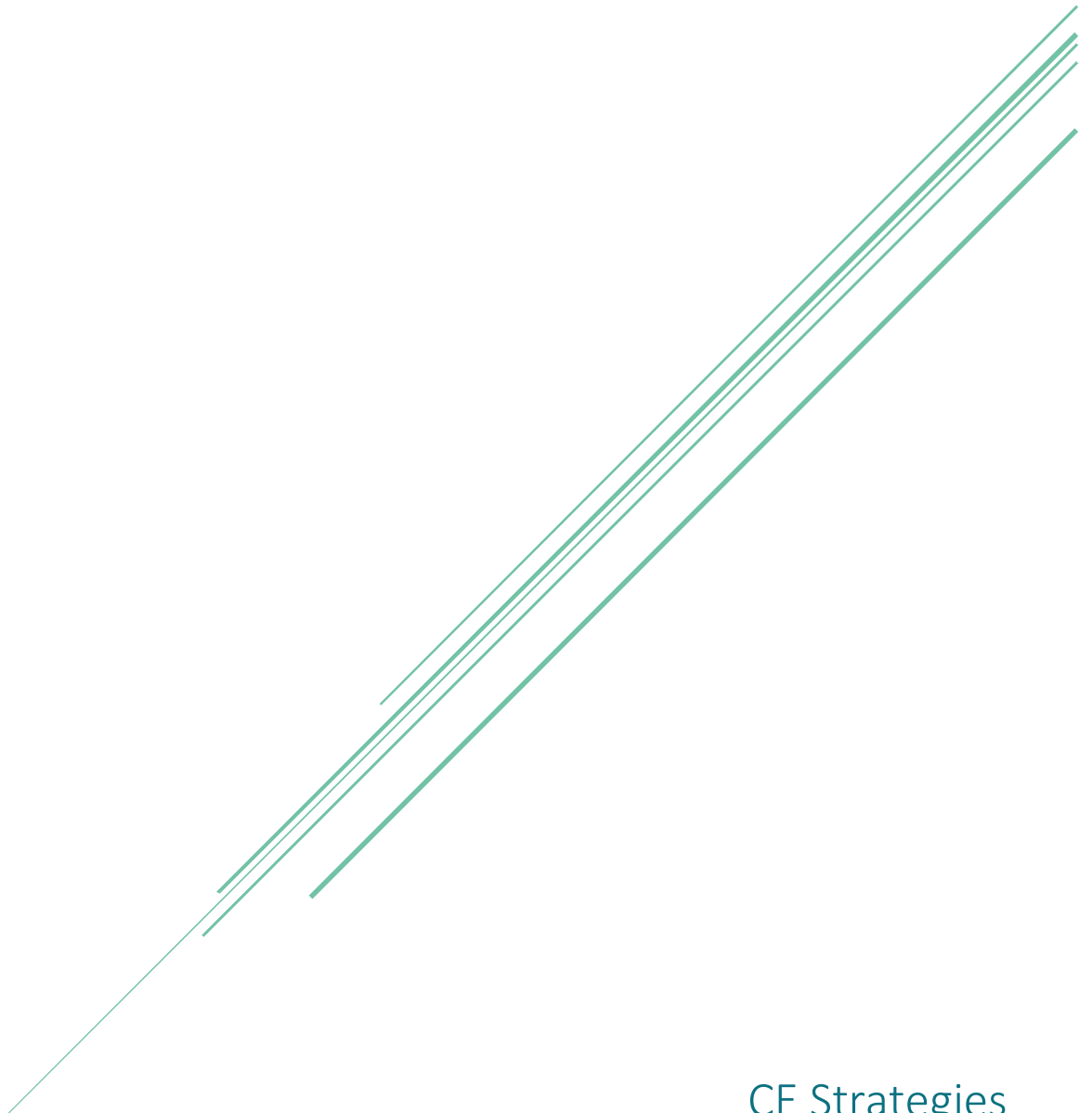


Township of Pickle Lake

Community Profile

March 2017



CE Strategies

www.cestrategies.ca



8A Cumberland St. N
Suite 203.
Thunder Bay, ON
P7A 4K9
Phone #: 807-285-0530

CE Strategies
Jordan Shannon, Managing Partner
8a Cumberland St. N. Suite 203
Thunder Bay, Ontario P7A 4K8
Tel: 807-620-6097
Email: jordan@cestrategies.ca

CE Strategies
Brent Forsyth, Senior Partner
8a Cumberland St. N. Suite 203
Thunder Bay, Ontario P7A 4K8
Tel: 807-707-2245
Email: brent@cestrategies.ca



Table of Contents

Pickle Lake at a Glance.....	1
History.....	2
Demographics	3
Population.....	3
Household Income (2010).....	3
Workforce Education Attainment.....	4
Language Knowledge	5
Labour Force	5
Employment by Occupation.....	5
Employment by Industry.....	5
Top Employers	6
Public.....	6
Private	6
Employment Rate.....	6
Labour Participation Rate	6
Payroll Costs.....	7
Workers Compensation – 2017	7
Employment Insurance – 2017	7
Social Insurance (Canada Pension Plan) -- 2017	7
Education	8
Primary & Secondary Education	8
Colleges	9
Universities.....	11
Transportation	12
Highways Connecting Pickle Lake	12
Driving Distance to Major Markets & Service Centres	13
Pickle Lake Airport (YPL/CYPL)	14
Railroads.....	15
Bus Service	15
Ports	15

Winter Roads	15
Utilities	17
Water System – Township of Pickle Lake	17
Wastewater System – Township of Pickle Lake	18
Landfill & Recycling	18
Township Dump Fees	18
Electricity Provider	19
Heating	19
Government	20
Municipal Government	20
Provincial Representation	21
Federal Representation	22
Taxation	22
Corporate Income Tax (2017)	22
Personal Income Tax (2017)	22
Sales Tax (2017)	22
Property Tax – Township of Pickle Lake (2016)	23
Economic Development	23
Financial Institutions	24
Business Development Resources	25
Local Permit Approvals – Township of Pickle Lake	26
Quality of Life	27
Acquisition of Crown (Public) Land	28
Communications & Media	29
Healthcare	29
Social, Community & Government Services	31
Annual Events & Activities	32
Religious Institutions	33
Volunteer Organizations	33
Climate	35

Pickle Lake at a Glance



As “Ontario’s Last Frontier” Pickle Lake and the surrounding pristine wilderness offer an unparalleled array of nature-based activities. With Pickle Lake as a base for services and re-supply, tourists and residents have road access to hundreds of lakes and camping areas, and water access to even more back-country adventure. Pickle Lake provides key access to Ontario’s Far North – an area comprising 42% of the province. With two

distinct ecological regions – the bogs and fens of the Hudson Bay Lowlands and the boreal forests of the Canadian Shield -- the Far North offers unforgettable outdoor adventures.

Visitors and residents alike, make use of the extensive trail of old logging and mining roads surrounding the community. Pickle Lake also provides a jumping off point for nine non-operating provincial parks, all of which offer a unique back country hiking, canoeing or white water kayaking adventures. Closer to home, there are many easily accessible lakes and river systems for canoeing, kayaking, swimming, boating bird-watching and fishing. Fly-in and drive-to lodges offer world class fishing combined with comfortable accommodations. Fall provides excellent hunting opportunities. During winter, the area becomes a playground for cross-country skiing, snow shoeing, ice fishing and snowmobiling.



History

In 1929 gold was discovered along the Crow River at Pickle Crow. By the mid 30's the area was thriving, requiring additional electrical supply. In 1938-1939, a new power line was built from Ear Falls to Central Patricia to meet demand.

At the time there was no airport or highway leading to Pickle Lake, meaning for a period of time between break-up and freeze-up, Pickle Lake was isolated from the rest of the province except for radio communications.

With the outbreak of World War II and the shortage of labour, mine operations slackened off considerably. Prospecting virtually came to a stand still, although both Pickle Crow and Central Patricia Mines continued production throughout the war.

Pickle Crow has since all but completely disappeared. Most of the buildings have moved out, dismantled or burned to the ground. The area including Pickle Crow, Central Patricia and Pickle Lake is now known as the Township of Pickle Lake.

Demographics

Population

2011 Census	2006 Census	Percentage Increase/Decrease
425	479	-11.27

Data Source: StatsCan – 2011 Census – Pickle Lake Census Profile

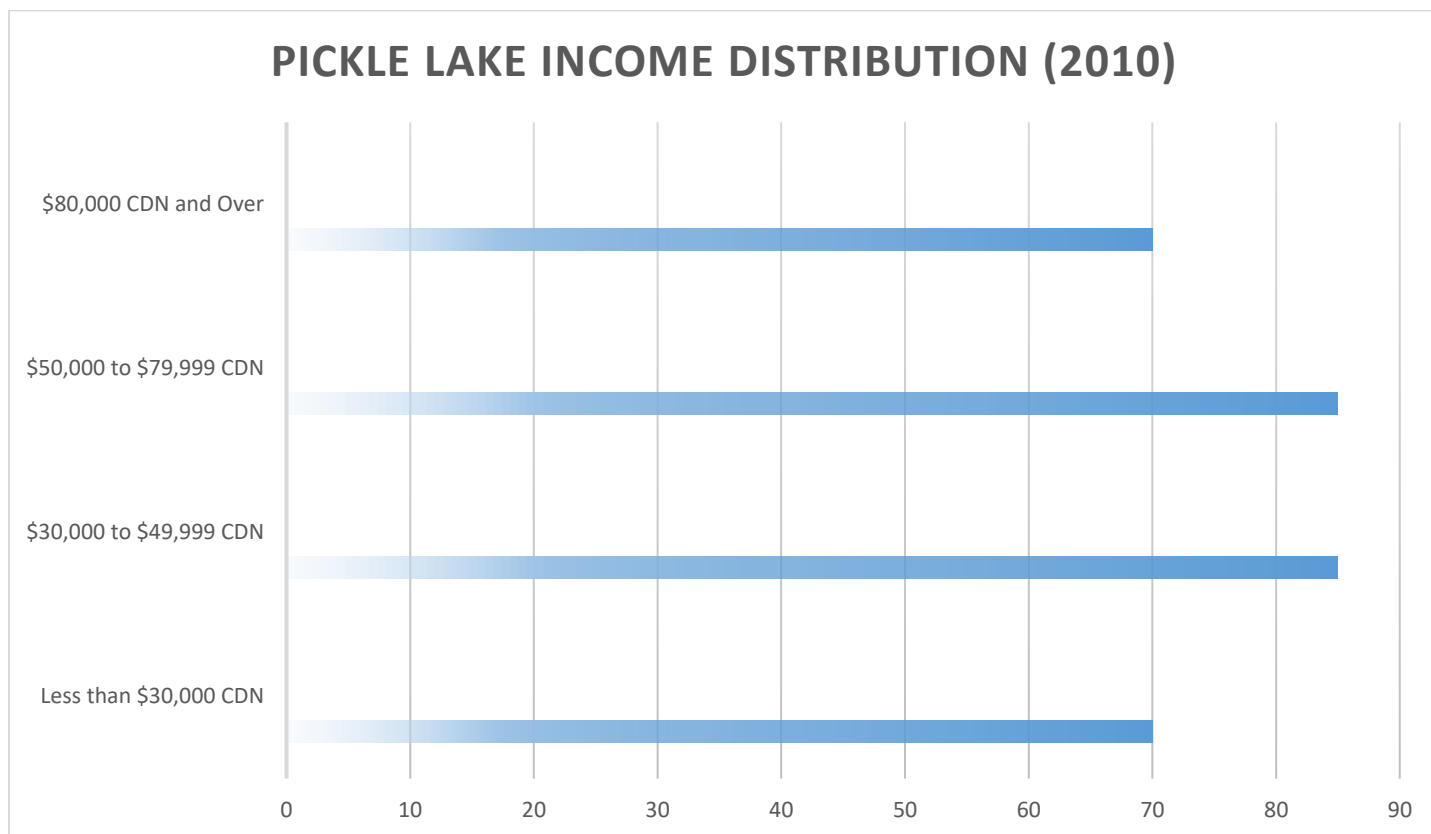
Population By Age Group	Population (2011)	Distribution
Under-18	115	27%
18-34	135	31.7%
35-54	105	24.7%
55-74	65	15.3%
75-Older	5	1.1%
Total:	425	100%
Median Age:	28.5	

Data Source: StatsCan – 2011 Census – Pickle Lake Age Characteristics

Household Income (2010)

Household Income	2010
Number of Households	180
Median Income (Individuals 15 & Older)	\$45,993 CDN
Median Income (Family)	\$80,616 CDN

Data Source: StatsCan – 2011 Census – “Selected Family Characteristics” -- www.statcan.gc.ca



Data Source: Stats-Can – National Housing Survey (NHS) 2010 – www.statscan.ca

Workforce Education Attainment

Level of Education (Age 15 and over)	Number Attained	Distribution
High School Diploma Only	120	39%
College/University Certificate/Diploma	105	34.4%
Less than High School Diploma	80	26.2%
Apprenticeship/Trades Certificate/Diploma	18	6%
University Bachelors Degree	0	0%
University Graduate Degree	20	6.5%
University Medical/Dentistry/Optometry Degree	0	0%

Data Source: StatsCan – National Housing Survey (2010) – Education – Pickle Lake



Language Knowledge

Language Spoken	Citizens
English	350
French	10
German	5
Ojibway	40
Oji-Cree	5
Estonian	5

Data Source: Stats-Can – 2011 Census – Detailed Mother Tongue – Pickle Lake Community Profile

Labour Force

Employment by Occupation

Occupation	Total	Male	Female
Population 15 years and over	240	140	100
Management	35		
Business, finance and administration	35	20	0
Natural and applied sciences	10	0	10
Education, law and social, community and government services	65	40	25
Sales and service	30	0	25
Trades, transport and equipment operators	35	35	0

Data Source: StatsCan – National Housing Survey (2010) – Labour – Pickle Lake

Employment by Industry

Industry	Total	Male	Female
Population 15 years and over	240	140	95
Accommodation and food services	20	0	20



Mining, quarrying, and oil and gas extraction	35	0	0
Retail trade	25	0	10
Public administration	70	60	0
Transportation, warehousing	40	0	25

Data Source: StatsCan – National Housing Survey (2010) – Labour – Pickle Lake

Top Employers

Public

Crolancia Public School

Township of Pickle Lake

Ontario Provincial Police

Private

Wasaya Airways

GoldCorp – Musselwhite Mine

Northwest Company

Employment Rate

% of Population

Unemployment Rate	10.4%
--------------------------	-------

Labour Participation Rate

Total Population 15 and over	305
In Labour Force	240
Employed	215
Unemployed	25

Data Source: StatsCan – National Housing Survey (2010)

Payroll Costs

Workers Compensation – 2017

Workers compensation in Ontario is administered by the *Workplace Safety & Insurance Board (WSIB)*, an independent trust agency that administers compensation and no fault insurance for Ontario workplaces. For more information and specific occupation-based rates, visit www.wsib.on.ca

Average Premium Rate Per \$100 Payroll \$2.43

Employment Insurance – 2017

Taxable Base

Based on gross payroll up to a gross per worker salary of \$51,300 per year

Percentage Rate (Employer Premium)

- **Employee Rate** 1.63%
- **Employer Rate** 2.282%

Maximum annual contribution per worker is \$836.19
Maximum annual contribution per worker is \$1,170.67

Data Source: Canada Revenue Agency. www.cra-grc.gc.ca

Social Insurance (Canada Pension Plan) -- 2017

Both employers and employees are required to contribute to the Canada Pension Plan

Taxable Base

Gross Payroll

Based on annual gross salary of \$53,300 CDN.

Employee/Employer Contribution Per Employee

4.95%

Employer premium equal to employee premium.

Maximum Annual Employer Contribution Per Employee

\$2,564.10

Employer contribution matches employee contribution.

Rate

4.95%

Maximum Annual Self-Employed Contribution

\$5,128.20

Data Source: Canada Revenue Agency. www.cra-grc.gc.ca

Education

Primary & Secondary Education

Institution	Crolancia Primary & Secondary School
Type of Institution/Education	Public Primary & Secondary run by the Keewatin Patricial District School Board
Campus/Address	1 Trudel Dr. Box 310 Pickle Lake, ON P0V 3A1 Tel: 807-928-2381
Website	www.crolancia.kpdsb.on.ca
Driving Distance from Community	Located in Pickle Lake
Enrollment (2016-2017)	85 (60 students in JK - Gr. 8; 25 students in Gr. 9 – 12)
Comments	27930 sq/ft school built in 1980. Currently operating far below capacity. Excellent student-teacher ratio. Secondary students access courses through program called ConnectEd – a Virtual Meeting Room offering distance education. ConnectEd has allowed most secondary students to remain in Pickle Lake for their education.



Figure 1 Crolancia Public School

Colleges

Institution	Confederation College
Type of Institution/Education	Post-Secondary College
Campus/Address	1440 Nakina Dr Thunder Bay, ON P7C 4W1 Tel: 807-475-6110 Branch campuses in Dryden, Kenora, Sioux Lookout, Fort Frances.
Website	www.confederationcollege.ca
Driving Distance from Community	Thunder Bay: 540 km Sioux Lookout: 258km Dryden: 353 km Kenora: 480 km

Enrollment	3254
Comments	College provides on-line distance education
Institution	Seven Generations Education Institute
Type of Institution/Education	Post-secondary education/certificates/diplomas/apprenticeships
Campus Address	Manidoo Baawaatig Campus 240 Veterans Dr., Box 1640 Kenora, ON P9N 3X7 Tel: 807-468-3096
Website	www.7generation.org
Driving Distance from Community	Nanicos Campus 1455 Idylwild Dr., Fort Frances, ON P9A 3M6 Tel: 807-274-2796
Enrollment	Kenora: 480 km Fort Frances: 547 km
Comments	Delivers post-secondary programs approved by the Ontario Ministry of Training, Colleges and Universities.
Institution	Contact North
Type of Institution/Education	On-line distance education
Campus Address	Township of Pickle Lake Library 14 Kovel St., Pickle Lake, ON P0V 3A0 Tel: 1-877-999-9149
Website	www.studyonline.ca
Driving Distance from Community	Located in Pickle Lake
Enrollment	N/A
Comments	Non-profit corporation funded by the province of Ontario. Provides on-line distance programs and courses from Ontario colleges, universities, district school boards and basic skills & training providers.

Universities

Institution	Lakehead University
Type of Institution/Education	Accredited university, offering undergraduate and graduate degrees.
Campus Address	955 Oliver Rd. Thunder Bay, ON P7B 5E1 Tel: 807-343-8110
Website	www.lakeheadu.ca
Driving Distance from Community	540 km
Enrollment	8680
Comments	Offers comprehensive web-based courses for distance education. Accredited by AUCC/IAU/COU

Institution	University of Manitoba
Type of Institution/Education	Comprehensive research university offering undergraduate and graduate degrees
Campus Address	66 Chancellors Circ., Winnipeg, MB R3T 2N2 Tel: 1-800-432-1960
Website	www.umanitoba.ca
Driving Distance from Community	750 km
Enrollment	29,987
Comments	Offers comprehensive web-based courses for distance education. Accredited by AUCC/IAU/ACU/CVU

Institution	University of Winnipeg
Type of Institution/Education	Accredited university offering undergraduate and graduate degrees
Campus Address	515 Portage Ave., Winnipeg, MB R3B 2E9 Tel: 204-786-7811
Website	www.uwinnipeg.ca
Driving Distance from Community	750 km

Enrollment	10,100
Comments	Offers comprehensive web-based courses for distance education. Accredited by AUCC/IAU/CUP

Transportation

Highways Connecting Pickle Lake

Highway 599

The Township of Pickle Lake is connected to the Trans-Canada Highway (Highway 17) the nation's main east-west highway system, via Highway 599. Highway 599 is a paved, year-round provincially-maintained 292 km long secondary highway connecting Pickle Lake to the Trans-Canada Highway at Ignace, ON. It is a sparsely-populated corridor and its terminus in Pickle Lake is the northern most point of the provincial highway system.



Figure 2 Highway 599 to Pickle Lake

Highway 516

Highway 516 is a 104 km long provincially-maintained, year-round highway connecting the Town of Sioux Lookout (pop. 5037) with Highway 599 north of Savant Lake. It is a popular route for Pickle Lake residents, as Sioux Lookout is an important regional hub. Furthermore, using Highway 516 to connect to Highway 72 in

Sioux Look out saves residents 40 km when driving to Dryden (pop. 7617) another important regional hub for Pickle Lake residents.

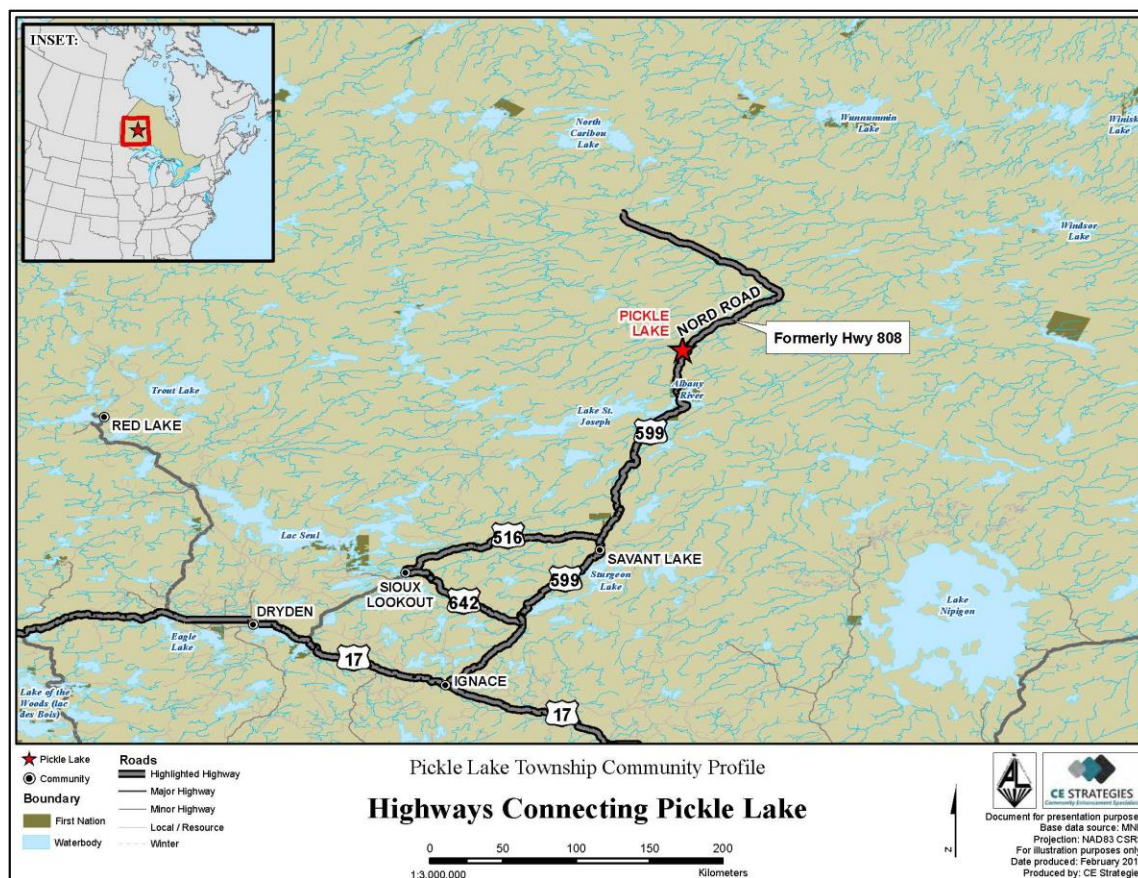
Highway 642

Highway 642 is a 74 km long provincially maintained year-round secondary highway connecting Highway 599 at Silver Dollar to Sioux Lookout. It represents an alternate route to and from Pickle Lake.

Nort Road (Formerly Highway 808)

The Nort Road, (the decommissioned Highway 808) picks up where Highway 599 ends, and it connects Pickle Lake to the Otokwin River Bridge, approximately 60 km north. The Nort Road is a year-round gravel road

most of which is maintained by Goldcorp-Musselwhite Mine. It is currently undergoing upgrades as it is the common road linking many remote First Nations communities' winter roads. There are no services provided along the Nord Road north of Pickle Lake.

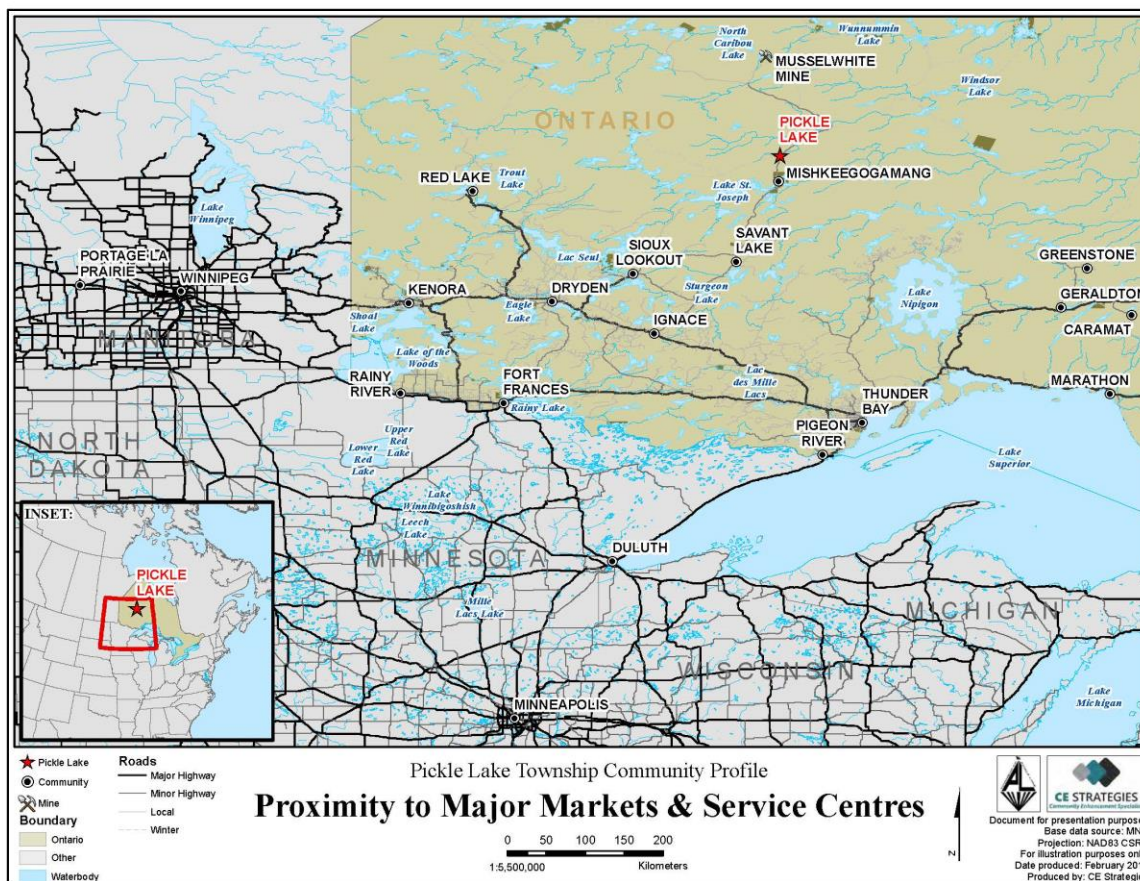


Driving Distance to Major Markets & Service Centres

City/Town/Service Centre	Distance in Kilometres
Mishkeegogamang First Nation (Osnaburgh)	30
Savant Lake	167
Musselwhite Mine	198
Sioux Lookout	258
Ignace	296
Dryden	353
Kenora	480
Thunder Bay	540
Fort Frances (US border crossing)	547



Pigeon River (US border crossing)	567
Winnipeg	750
Duluth	812
Minneapolis	1022



Pickle Lake Airport (YPL/CYPL)

Hub Status

Distance From Community

Operator

Hours of Operation

Contact Information

Commercial

1.3 km

Ontario Ministry of Transportation (MTO)

2 Airport Rd.,
Pickle Lake, ON
POV 3A0
Tel: 807-928-2342

Approved Capital Expansion	Airport recently received \$10 million upgrade, including repaved shoulders, extended runway and new lights.
Customs Point of Entry	No
Full Instrumentation	
Number of Runways	1
Runway Length	4921 ft/1500 m
Runway Type	Paved
Helicopter Pad	No. Local Ministry of Natural Resources and Forestry (MNRF) Base has helicopter pad.
Carriers	Wasaya Airways Website: www.wasaya.com Tel: 1-877-492-7292 North Star Air Website: www.northstarair.ca Tel: 1-844-633-6294
Weekly Flights	Wasaya – 150-160 flights per week, majority of which are northbound to various First Nations

Railroads

The Canadian National (CN) line passes 167 km south of Pickle Lake at Savant Lake. There is VIA Rail passenger service available at Savant Lake, although there is no railway station. The nearest passenger station is in Sioux Lookout, 258 km from Pickle Lake, where VIA Rail provides passenger service six days a week. Pickle Lake does not have access to rail freight. The nearest intermodal (freight) facility is in Thunder Bay, 540 km south of Pickle Lake.

Bus Service

There is no bus service to or from Pickle Lake. A mini-bus system linking Sioux Lookout to Thunder Bay is currently in service. The nearest Greyhound Bus Terminal is in Dryden, 353 km from Pickle Lake.

Ports

The nearest port – local and ocean going -- is the Port of Thunder Bay, 540 km south of Pickle Lake.

Winter Roads

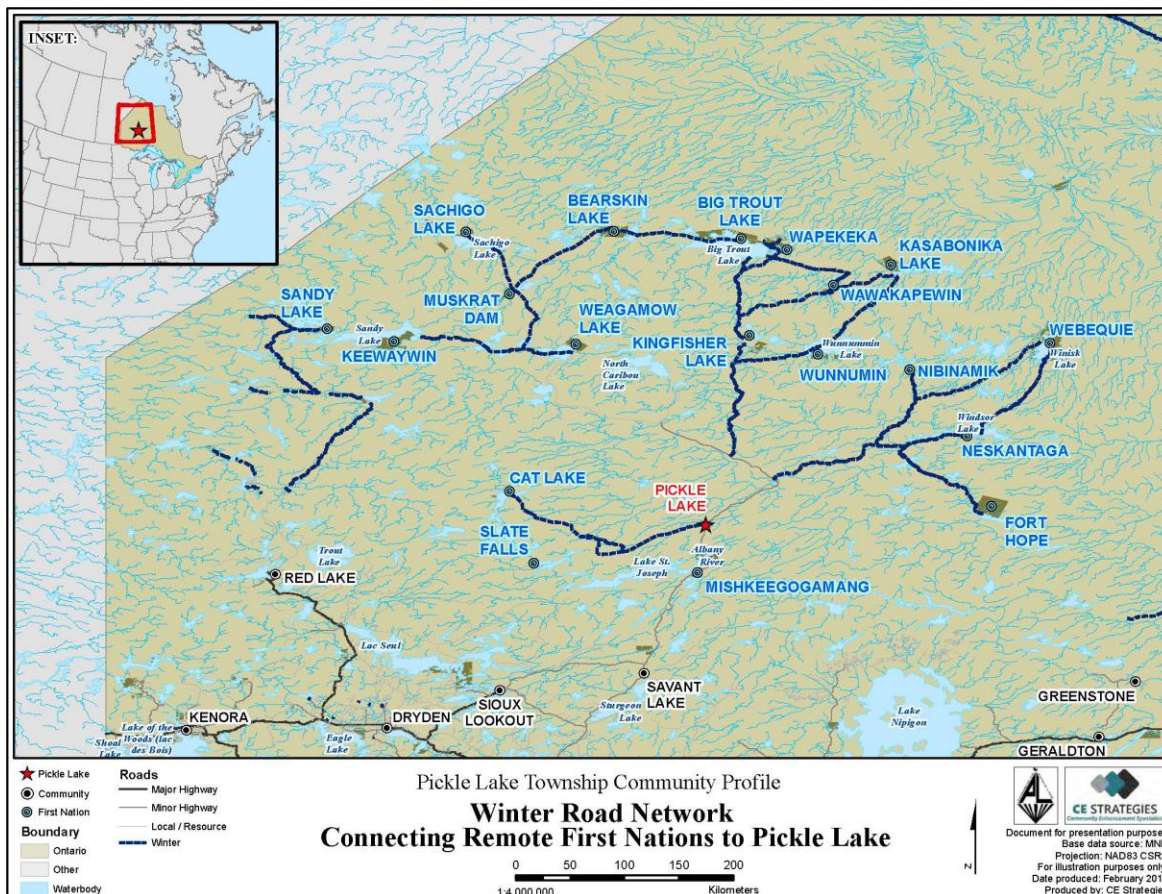
Pickle Lake connects an extensive network of northern winter roads to the Highway 599 corridor by way of the Nord Road which runs north of Pickle Lake. The winter road system plays an important role in the regional and local economy as it provides a less-expensive method of transporting vital goods and services to isolated northern communities. Currently, the Nord Road, which is shared by numerous First Nations communities and is under the jurisdiction of the MTO, is undergoing extensive upgrades, including bridge and road widening.



This upgrade is in anticipation of an all-weather northern road system currently in the early discussion and planning stage.

The winter road network connects Pickle Lake to the following communities:

Community Name	Population	Source
Nibinamik	440	2009 Wikipedia
Webique	1320	2015 Wikipedia
Neskantaga	237	2016 Stats Canada
Eabametoong	1144	2006 Wikipedia
Cat Lake	565	2016 Stats Canada
Slate Falls	187	2016 Stats Canada
Wunnumin Lake	593	2016 Stats Canada
Kingfisher Lake	500	2009 Wikipedia
Wawakapewin (Long Dog)	22	2016 Stats Canada
Kasabonika	849	2016 Stats Canada
Wepekeka (Angling Lake)	440	2016 Stats Canada
Kitchenuhmaykoosib Innuiwug (Big Trout Lake)	1024	2016 Stats Canada
Bearskin Lake	355	2016 Stats Canada
Sachigo Lake	514	2016 Stats Canada
Muskrat Dam	281	2016 Stats Canada
Keewaywin	340	2011 Wikipedia
Sandy Lake	2017	2016 Stats Canada
Weagamow	886	2016 Stats Canada
Round Lake/North Caribou)		
TOTAL POPULATION SERVED	11714	



Utilities

Water System – Township of Pickle Lake

The Township of Pickle Lake owns and operates a high-quality water treatment facility under the supervision of the Province of Ontario. It regularly scores 100% in drinking water quality tests meeting provincial standards. (Data Source: www.ontario.ca/data/drinking-water-quality-and-enforcement). The township draws its water from two 89-foot-deep wells from which water takes 7 years to filter up through the esker. The water is further treated in the township-owned treatment facility and is stored in a water tower with at 220 000 - gallon capacity.

The township drinking water system runs at 15% or less of capacity, and was built to service a community of 2500. A 2014 Asset Management Plan rated the township's water network condition as "fair".

Name of Provider	Township of Pickle Lake
Regulatory Agency	Province of Ontario
Rated Capacity	3900 cubic metres/day
Average Daily Demand	300 – 500 cubic metres/day
Water Billing Rate (non-metered)	\$136.10 CDN per quarter/ \$544.40 CDN per year

Data Source: Township of Pickle Lake

Wastewater System – Township of Pickle Lake

Pickle Lake operates a provincially-regulated wastewater treatment system. It is currently operating well-below capacity. The township estimates that 20% of the water treated is infiltration rather than sewer. A 2014 Asset Management Plan rated the township's sewer network condition as "good".

Name of Provider	Township of Pickle Lake
Regulatory Agency	Province of Ontario
Rated Capacity	909 cubic metres/day
Average Daily Demand	500 cubic metres/day
Wastewater Billing Rate	\$136.10 CDN per quarter/ \$544.40 CDN per year

Data Source: Township of Pickle Lake

Landfill & Recycling

The Township of Pickle Lake provides regular residential and commercial trash collection and operates a municipal landfill site on Kapkichi Road. Currently, the location accepts only tires, electronic waste and batteries in its recycling program.

Township Dump Fees

Description	Fee/Charge
Contaminated Soil	
• ½ ton or trailer or less	• \$25.00 per load
• 2 to 5 tons	• \$200.00 per load
• Tandem (8-9 cubic yards)	• \$425.00 per load
Other Permitted Hazardous Waste	
• ½ ton or trailer or less	• \$20.00 per load
• 2 to 5 tons	• \$175.00 per load
• Tandem (8-9 cubic yards)	• \$400.00 per load



Construction/Demolition Materials, Concrete, Lumber, Steel, Shingles, Ski-Doo Crates, Brush & Garbage

- | | |
|-----------------------------|---------------------|
| • ½ ton or trailer or less | • \$15.00 per load |
| • 2 to 5 tons | • \$50.00 per load |
| • Tandem (8-9 cubic yards) | • \$125.00 per load |
| • Tri-axle truck or trailer | • \$225.00 per load |

Tagged Fridges, Freezers, Air Conditioners, Washers, Dryers, Stoves, Dishwashers, Furnaces, Oil Tanks (up to 250 gallons)

- \$10.00 each

Oil/Gas Barrels (empty only)

- \$5.00 each

Pallets

- \$3.00 each

Septic Waste and Wastewater Disposal

- | | |
|--|-----------------------------|
| • Resident Sewage Fee (Resident or Non-Resident Hauler) tanker truck, or solid load | |
| 1 to 1000 gallons | • \$10.00 |
| Per 1000 gallons thereafter | • \$10.00 each/1000 gallons |
| • Non-Resident Sewage Fee (Resident or Non-Resident Hauler) tanker truck or solid load | |
| 1 to 1000 gallons | • \$20.00 |
| Per 1000 gallons | • \$20.00 each/1000 gallons |

Source: Township of Pickle Lake, Consolidated Fee By-law 2012-26, Schedule G – Waste Disposal – Hazardous Substances

Electricity Provider

Hydro One Networks Inc., provides both residential and commercial power and Pickle Lake is part of the provincial electricity grid. Power lines connect the community to the grid via a line to the Ear Falls Station to the Pickle Lake substation. For more information, including current electricity rates, see: www.hydroone.com

Heating

Heat Source	Address & Contact Information	Comment
Natural gas		Not available in community
Propane	<ul style="list-style-type: none"> • Superior Propane Dryden , ON Tel: 1-877-873-7467 	

Website:
www.superiorpropane.com

Home heating oil	<ul style="list-style-type: none"> Morgan Fuels 9 Nord Rd., Pickle Lake, ON P0V 3A0 Tel: 1-807-928-2261 Website: www.morganfuels.ca E-mail: pickle@morganfuels.ca 	Has bulk depot in Pickle Lake
Wood	Locally gathered	Some houses use wood as primary or backup heat source. There are large amounts of birch and jackpine locally available either for purchase or to harvest.
Electric	Hydro One Networks Inc. Tel: 1-888-664-9376 www.hydroone.com	

Government

Municipal Government

Township of Pickle Lake

Form (Structure)	Mayor and Council
Number of Elected Officials	5
Mayor	Karl Hopf
Chief Administrative Officer/Clerk-Treasurer	Erkki Pohjolainen



Figure 3 Pickle Lake Municipal Office with Health Clinic in background

Provincial Representation

Name of Member of Provincial Parliament (MPP)	Sarah Campbell
Constituency/Riding	Kenora-Rainy River
Party Affiliation	New Democratic Party (NDP)
Nearest Constituency Office Address	Unit 104 73 King St., Sioux Lookout, ON P8T 1A1 Tel: 807-737-2210 Fax: 807-737-1592 E-mail: scmpp@ndp.on.ca

Federal Representation

Name of Member of Parliament (MP)	Robert Nault
Constituency/Riding	Kenora
Party Affiliation	Liberal
Nearest Constituency Office Address	Suite 1A – 54 Front St., Sioux Lookout, ON P8T 1A1 Tel: 807-737-4934 E-mail: Bob.Nault@parl.gc.ca

Taxation

Corporate Income Tax (2017)

Federal Rate	10 – 15%
Provincial Rate	4.5 – 11.5%

Data Sources: www.cra-arc.gc.ca

Personal Income Tax (2017)

Federal (Earned Income)	15 – 33%
Provincial (Earned Income)	5.05 – 13.16%

Data Sources: www.cra-arc.gc.ca & www.fin.gov.on.ca

Sales Tax (2017)

Harmonized Sales Tax (HST)	13%
-----------------------------------	-----

Property Tax – Township of Pickle Lake (2016)

Levy	Rate
Residential	.029157755
Multi-residential	.043063085
Commercial -- occupied	.044383936
Commercial – vacant	.031068755
Commercial – excess land	.031068755
Industrial -- occupied	.032073531
Industrial -- vacant	.020847797
Industrial – excess land	.020847797
Farmland	.00728944
Managed forest	.00728944

Data Source – Township of Pickle Lake

Economic Development





Currently, Pickle Lake's economy focuses on services and transportation to northern communities. The economy depends on the movement of goods and services to as many as twenty communities, including four closest to the Ring of Fire (ROF) (Source – *Northern Ontario Business* July 15, 2014) This supply chain economy and scattered gold exploration are the backbone to the local economy.

Recently, Pickle Lake has been provided with an investment through FedNor's Community Investment Initiative for Northern Ontario (CIINO), which has enabled the community to establish a local economic development office and hire a full-time economic development officer for a three-year period. The officer will coordinate the development of a three-year strategic plan and investment readiness strategy, and support local marketing efforts. Identified as a local priority, this initiative will help attract private sector investment to the area and support business development and growth.

Financial Institutions

Financial Institution	Location	Distance From Pickle Lake
Desjardins Credit Union	3 Kovel St., Pickle Lake, ON P0V 3A0 Tel: 807-928-2968 Located in Northern Store	Located in community
Canadian Imperial Bank of Commerce (CIBC)	50 Front St., Box 189 Sioux Lookout, ON P8T 1A3 Tel: 807-737-2331	258 km
Bank of Montreal (BMO)	61 Front St., Sioux Lookout, ON P8T 1B1 Tel: 807-737-1861	258 km
Northern Lights Credit Union	42 King St., Sioux Lookout, ON P8T 1A5 Tel: 807-737-1567	258 km
Royal Bank of Canada (RBC)	40 King St., Dryden, ON P8N 2Y7 Tel: 807-223-5251	353 km
TD Canada Trust	30 Princess St., Dryden, ON P8N 1C6 Tel: 807-223-5237	353 km

Business Development Resources

Resource	Location & Contact Information	Comments
Pickle Lake Economic Development Office	Lynn Cox – Economic Development Officer Township of Pickle Lake 2 Anne St., P.O. Box 340 Pickle Lake, ON P0V 3A1 Tel: 807-928-2034 ext. 203 Website: www.picklelake.ca E-mail: edo@picklelake.ca	Focused on inspiring economic growth and fostering collaborative partnerships for the community. Offers support and advice for new businesses and capacity development.
Patricia Area Community Endeavours (PACE)	Donna Pollock – General Manager 66 Keith St., Unit A P.O. Box 668 Dryden, ON P8N 2Z3 Tel: 1-800-465-3294 Website: www.pace-cf.on.ca E-mail: info@pace-cf.on.ca	Promotes economic growth within Patricia region of Northwestern Ontario. Encourages local community and economic development through the provision of small business loans, non-profit funding, counselling and support for entrepreneurs and community groups.
Business Development Bank of Canada (BDC)	227 Second St. S., Kenora, ON P9N 1G1 Tel: 1-888-463-6232 Website: www.bdc.ca	Provides small business loans or additional financing for larger projects. Provides network of experienced business consultants.
PARO Centre for Women's Enterprise	110 – 105 May St., N., Thunder Bay, ON P7C 3N9 Tel: 1-800-584-0252 Website: www.paro.ca E-mail: info@paro.ca	Provides programs and services to women across Northern Ontario who are ready to start, grow or build new opportunities.
Northwestern Ontario Innovation Centre	Judy Sander – Manager 2400 Nipigon Rd., P.O. Box 398 Thunder Bay, ON P7C 4W1 Tel: 1-866-718-6682 Website: www.nwoinnovation.ca	Provides support for innovation through access to funding, grant-writing, technical, hiring and business advice.

Canada Business Network -- Ontario	E-mail: info@nwinnovation.ca 4 th Floor – 151 Yonge St., Toronto, ON M5C 2W7 Tel: 1-888-576-4444 Website: www.canadabusiness.ca	Source for information on government services for businesses in Ontario – from start-up financing to growth and regulatory compliance.
Northwest Business Centre	227 Second St., S Kenora, ON P9N 1G1 Tel: 1-866-336-7779 Website: www.nwbiz.ca E-mail: business@nwbiz.ca	Offers free services to entrepreneurs in Kenora-Rainy River District. Provides business tools, and resources, start-up and expansion assistance, youth entrepreneurship assistance & funding guidance.
Northern Ontario Heritage Corporation (NOHFC)	Roberta Bondar Place, 70 Foster Dr., Suite 200 Sault Ste. Marie, ON P6A 6V8 Tel: 1-705-945-6700 Website: www.nohfc.ca E-mail: AskNOHFC@ontario.ca	Program funded and operated by the Ontario Ministry of Northern Development & Mines (MNDM). Has various funding streams aimed at building a prosperous northern Ontario.
FedNor	Scott Kunnas – Manager, Program Delivery 224 Lincoln St., Thunder Bay, ON P7B 5L2 Tel: 1-877-333-6673 ext. 1810 Website: www.fednor.gc.ca	Federal government's regional development organization assisting business and community economic development through financing and planning.

Local Permit Approvals – Township of Pickle Lake

Type of Permit	Average Time for Approval	Associated Fees
Building Permit	0.80 weeks (2016)	<ol style="list-style-type: none"> 1. All new construction - \$5 /\$1,000 of project cost 2. All renovation - \$5 /\$1,000 of project cost 3. All demolition - \$5 /\$1,000 of project cost Change of Use - \$100 per unit

Quality of Life

Cultural/Recreational Infrastructure	Location/Address	Comments
Pickle Lake Arena	33 Dickenson St., Pickle Lake, ON POV 3A0 Tel: 807-928-2826	Township owned and maintained arena with natural ice in wintertime. Used for hockey and public skating. Used in summer time and non-ice periods for volleyball/broomball and summer recreation program.
Curling Rink	33 Dickenson St., Pickle Lake, ON POV 3A0 Tel: 807-928-2126	Township owned curling rink with two sheets of ice. Operated by local curling club.
Bowling Alley	Pickle Lake Community Hall 14 Kovel St., Pickle Lake, ON POV 3A0 Tel: 807-928-2371 E-mail: rec1@picklelake.ca	Township owned two lane bowling alley with two lanes. League bowling runs through winter months. Available for private bookings.
Fitness Centre	3 Anne St., Pickle Lake, ON POV 3A0	Township owned gym. 24-hour keyed access. 20 pieces of equipment including weights, weight machines, treadmills and stationary bikes. Membership ranges from 80 to 100 people. Memberships sold at township office.
Pickle Lake Library	Pickle Lake Community Hall 14 Kovel St., Pickle Lake, ON POV 3A0 Tel: 807-928-2371	Maintained by township. Operated on volunteer basis & open by appointment. Is designated Community Access Site.
Public Boat Launches	<ul style="list-style-type: none"> Township beach, providing access to Pickle Lake Township boat launch at Kapkichi Lake 	Both public launches are maintained by the township.
Public Beach/Parks	<ul style="list-style-type: none"> Beach and park situated within Township of Pickle Lake. 	<ul style="list-style-type: none"> Local public beach & park on Pickle Lake. Maintained by the township.

	<ul style="list-style-type: none"> • Baseball diamond in the community. • Pine Ridge Cemetery 	<ul style="list-style-type: none"> • Baseball diamond maintained by township. • Cemetery maintained by township but managed by a cemetery committee.
Camp grounds	<ul style="list-style-type: none"> • Badesdawa Lake (41 km north) • Menako Lake (105 km north) • Pipestone River (147 km north) • Mawley Lake (165 km north) • Serviced RV park at Township beach 	<ul style="list-style-type: none"> • Township operates four campgrounds along the gravel road north of the township. Sites are basic, with outdoor toilets and boat launches. • Camping permits available for sale at Township Office.
Hiking/Snowmobile Trails	Numerous trails exist, both within the township and outside of township limits. They offer excellent access to outdoor/nature-based activities. Trails often follow old logging or mining roads.	Trails are not maintained by the township. Maintenance is volunteer-based. Snowmobile trails are not part of the provincial trail system.
Provincial Parks	<ul style="list-style-type: none"> • Albany River Provincial Park • Fawn River Provincial Park • Otokwin/Attawapiskat River Provincial Park • Pipestone River Provincial Park • Opasquia Provincial Park • Polar Bear Provincial Park • St. Raphael Provincial Park • Severn River Provincial Park • Wabakimi Provincial Park • Winisk River Provincial Park 	<p>These parks may be accessed through Pickle Lake or using Pickle Lake Services (such as flights from Pickle Lake to Opasquia or Polar Bear Provincial Parks.)</p> <p>These provincial parks are non-operating parks, with no facilities or activities. They are designed for back country canoeing and camping, and they are an important part of the region's resource-based tourism. For more information visit: www.ontarioparks.com</p>

Acquisition of Crown (Public) Land

Any use of Crown (public) land in Ontario usually requires the approval of the Ministry of Natural Resources and Forestry (MNRF). The province of Ontario no longer actively markets, rents or sells Crown Land for private recreational or residential use. However, the province is actively focusing its efforts on working with northern Ontario communities and other parties to make Crown Land available at market value to support local economic development. For more information, please visit the following link:

<https://www.ontario.ca/page/guide-cottage-lot-development-crown-land>

Communications & Media

Type of Media/Communication	Comment
Television Providers -- Cable & Satellite	<ul style="list-style-type: none"> Bell Canada Tel: 1-866-301 -1942 Website: www.bell.ca Shaw Direct Tel: 1-888-554-7827 Website: www.shaw.ca
Community Newspaper	No
Radio Stations	<ul style="list-style-type: none"> 104.5 FM (CFDK) – Regional radio station playing popular music & providing regional/local news and events coverage. 105.1 FM (CBQP) Canadian Broadcasting Corporation (CBC) offering national and regional news coverage & mix of music, information and cultural programming.
Telephone & Cell Service Provider	Bell Canada Tel: 1-866-301 -1942 Website: www.bell.ca
High Speed Internet Provider	Celerity Telecom Tel: 1-888-351-9748 Website: http://www.celeritytelecom.net

Healthcare

Provider	Address/Location	Comments
Pickle Lake Health Clinic	3 Anne St., P.O. Box 302 Pickle Lake, ON P0V 3A0 Tel: 807-928-2047 Website: www.picklelake.ca/medical-clinic/ E-mail: picklelake.healthclinic@picklelake.org	Modern primary care clinic/emergency room & dental clinic managed by Township of Pickle Lake. Staffed by permanent nurse and a physician on three-week rotation in and out of community. After-hours emergencies handled by Ambulance Service

Pickle Lake Ambulance	6 Anne St., Pickle Lake, ON P0V 3A0 Tel: 807-928-2081	Operated by the Kenora District Services Board (KDSB). Two ambulances and six paramedics provide emergency services and land transfer of patients to area hospitals (Sioux Lookout and Thunder Bay.) Handles emergency services when clinic is closed.
Meno Ya Win Health Centre	1 Meno Ya Win Way Sioux Lookout, ON P8T 1B4 Tel: 807-737-3030 Website: http://www.slmhc.on.ca E-mail: info@slmhc.on.ca	Fully accredited 60 bed hospital and 20 bed extended care facility, serving Sioux Lookout and surrounding area including Pickle Lake. Located 258 Km from Pickle Lake.
Ornge	5310 Explorer Dr., Mississauga, ON L4W 5H8 Tel: 1-800-251-6543 Fax: 647-428-2006 Website: www.ornge.ca E-mail: info@ornge.ca	Provincial air ambulance service provides medical transport to people who are critically-ill or injured.
Thunder Bay Regional Health Sciences Centre	980 Oliver Rd., Thunder Bay, ON P7B 6V4 Tel: 807-684-6000 Website: www.tbrhsc.net E-mail: tbrhsc@tbh.net	375 bed acute care teaching hospital serving Thunder Bay and northwestern Ontario. Offers expansive range of specialist services.
Meno Ya Win Mental Health and Addiction Program	1 Meno Ya Win Way Sioux Lookout, ON P8T 1B4 Tel: 1-877-737-1275 Website: http://www.slmhc.on.ca E-mail: mailto:info@slmhc.on.ca	Provides mental health and addiction services to Pickle Lake.
Telehealth Ontario	Tel: 1-866-797-0000	Free, confidential service providing health advice or information. Staffed by registered nurses, Telehealth provides information 24 hours a day, 7 days a week.

Social, Community & Government Services

Provider	Contact/Address	Comments
Best Starts Hub	3 Anne St., Pickle Lake, ON POV 3A0 Tel: 1-807-928-2622 Website: www.kenoradistrictbeststart.ca	Comprehensive, evidence-based early learning and care strategy designed to help give Ontario's children the best possible start in life and help them achieve success in school.
Daycare		No program in the community
Ministry of Natural Resources and Forests (MNRF) Fire Base	3 W. Airport Rd P.O. Box 159 Pickle Lake, ON POV 3A0 Tel: 807-928-2470	
Ministry of Transportation – MTO/Airport	2 Airport Rd., P.O. Box 36 Pickle Lake, ON' POV 3A0 Tel: 807-928-3242	Operates and maintains Pickle Lake Airport.
Ministry of Transportation – MTO/Highways	18 Nord Rd., Pickle Lake, ON POV 3A0 Tel: 807-928-2480	Maintains provincial highways.
Northwestern Health Unit	3 Anne St., Pickle Lake, ON POV 3A0 Tel: 1-800-830-5978 Website: www.nwhu.on.ca E-mail: talkpublichealth@nwhu.on.ca	Provincial public health unit. Maintains offices in 13 communities throughout region.
Ontario Provincial Police	6 Anne St., Pickle Lake, ON POV 3A0 Administrative Tel: 807-928-2211 Crisis Tel: 1-888-310-1122 Website: http://www.opp.ca	Sub-detachment of the Sioux Lookout division with eight uniformed officers and two civilian employees.
Ontario Works	59 King St., Sioux Lookout, ON P8T 1A4 Tel: 1-808-737-7117 Website: www.mcass.gov.on.ca	Provincial government agency assists people in financial need, or those requiring employment assistance. Located 258 km from Pickle Lake.

Pickle Lake Volunteer Fire Department	60 Dickenson St., Pickle Lake, ON POV 3A0 Tel: 807-928-2255	Volunteer force of 16 members two trucks and one emergency vehicle. Responsible for fire prevention and administration of the Ontario Fire Code. Issues burn permits.
Pickle Lake Weather Station	Pickle Lake Road P.O. Box 246 Pickle Lake, ON POV 3A0 Tel: 807-928-2431 E-mail: royhoffman@knet.ca	Provides local weather information for airport.
Post Office	Canada Post – Pickle Lake 11 Koval St., Pickle Lake, ON POV 3A0 Tel: 807-928-2010 Website: www.canadapost.ca	Hours of Operation: 8:00 am – 5:00pm
Seniors Housing/Assisted Living		No program in the community. Nearest seniors housing/assisted living is in Sioux Lookout & Dryden Municipal government office.
Township of Pickle Lake	2 Anne St., P.O. Box 340 Pickle Lake, ON POV 3A0 Tel: 1-800-565-9189 807-928-2034 Website: www.picklelake.ca E-mail: reception@picklelake.org	

Annual Events & Activities

Event	Date	Comment
Black Fly Festival	Annually -- July 1 - 3	Community's Canada Day celebration. Includes horseshoe tournaments, plane rides, games, cook-offs, fireworks and a dance.
Ice Worm Festival	Annually – held on February Family Day long weekend	Winter festival including hockey tournaments, ice sculptures and ice fishing tournaments.
Summer Recreation Program	Annually, July - August	Annual summer program run by volunteer recreation committee. Program is for children from 4 to

		15 running Monday through Friday during the summer. Various activities include outings, hiking sporting events, craft making and baking. Most activities take place at the community hall. Registration is through the Township office: 807-928-2034.
Kids Fun Night	Friday evenings during school year	Weekly activity evening for children run by the Pickle Lake Recreation Committee. For more information contact the Township office: 807-928-2034.

Religious Institutions

Institution	Contact/Address
Friendship Baptist Church	1 Connell St Pickle Lake, ON POV 3A0 Tel: 1-807-928-2181
Our Lady of the Holy Rosary Roman Catholic Church	Central Patricia Pickle Lake, ON POV 3A0 Tel: 1-807-928-2341
Pickle Lake Gospel Chapel (Mennonite)	14 Pickle Lake Rd., Pickle Lake, ON POV 3A0 Tel: 807-928-2509

Volunteer Organizations

Organization	Address/Contact Information	Comment
Lions Club	P.O. Box 38 Lakeview B & B Pickle Lake,	Service club that supports community projects and individuals in need through volunteerism and

Junior Canadian Rangers	ON POV 3A0 Website: www.lionsclub.org Website: www.jcr-rjc.ca	fund-raising. Meets every second Sunday of the month. Government sponsored program providing skills training and fellowship for young people in northern communities where opportunities for participation in a wide variety of activities are limited.
Pickle Lake Curling Club	Tel: 807-928-2126	Makes and maintains ice at curling rink. Organizes curling games and bonspiels.
Pickle Lake Recreation Committee	807-928-2034	Committee meets monthly to plan cultural, social and sporting activities for community. Involved in Ice Worm and Black Fly Festivals. Organizes summer recreation program and Friday evening Kids Fun Night.



Pickle Lake, Mishkeegogaming and Lac Seul Junior Canadian Rangers meeting

Climate

Location: Pickle Lake, ON
Latitude: 51 degrees 26'47.00" N
Longitude: 90 degrees 12'51.00" W
Elevation: 1267.06 feet/386.20 metres