

NORTH WESTERN ONTARIO'S

North West Shopper

Volume 1 No 2

November 30th



The Winter Roads Will Be Ready Soon!

Time To Make Sure All Your Arrangements Are Made For
Building Supplies

Fuel & Gas

Vehicles

Groceries

Hardware

Machinery

Support North West Shopper Advertisers For All Your Needs

CLIP & SAVE BY YOUR TELEPHONE

Tom's Taxi

Pickle Lake

928-2457

Do You Plan On Partying
Over The Coming Holiday
Season?
Leave Your Car At Home & Call
Tom's Taxi!
Clip This Ad And Leave
By Your Telephone!

Fast, Friendly Service
In Town Service & Long
Distance Trips

Tom's Taxi 928-2457

Avis Car & Truck Rentals
928-2178

Dave Lockwood 928-2412

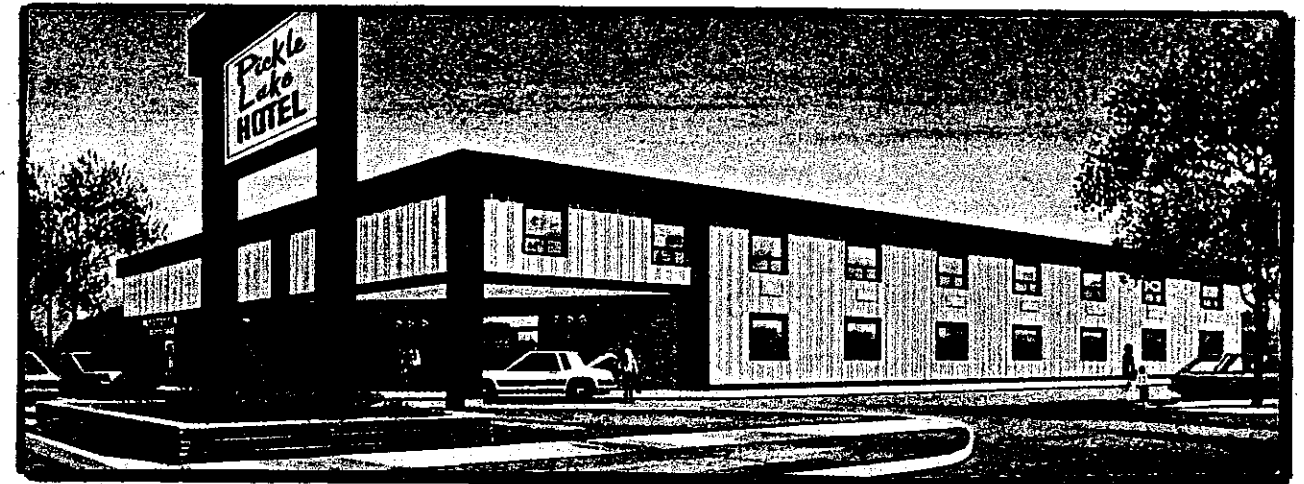


For Car & Truck
Rentals

928-2178

Call For Our Rates On
Sioux Lookout & Thunder Bay
Trips

Head South This Winter... Come To Pickle Lake



The Pickle Lake Hotel Would Like To Share The Christmas Spirit
With All Our Friends In Neighboring Northern Communities.

The Merchants In Pickle Lake Have Stocked
Their Shelves With Lots Of Great Christmas
Shopping Values And Plenty Of Variety And We

Invite You To Spend A Few Days With Us At
The Pickle Lake Hotel While You Fill Your
Christmas Wish List.

The Pickle Lake Hotel Offers You The Choice Of Two Great Christmas Season Values

Book 2 Nights

At The Pickle Lake Hotel Anytime Between
November 15th And December 23rd And
Receive A 20% Discount On Accommoda-
tions!

The Pickle Lake Hotel Features:

- *Large Comfortable Rooms All With Colour T.V.
- *Relaxed Dining In Our Fully Licenced Dining Room
- *Fully Licenced Lounge *Free Airport Transportation
- *Free Parking *Plug-Ins

Ask About Banquets & Christmas Parties
*20% Discount Values Cannot Be Combined

Fly Bearskin Airlines

Fly Bearskin Airlines To Pickle Lake Be-
tween November 15th and December 23rd
1992 and Present Your Current Dated
Airline Ticket Upon Checking Into The
Pickle Lake Hotel And Receive 20%
Discount On Your Accommodations.

*20% Discount Values Cannot Be Combined

Bearskin Airlines



enRoute

For Further Details & Reservations

Pickle Lake Hotel 928-2581 Fax 928-2643



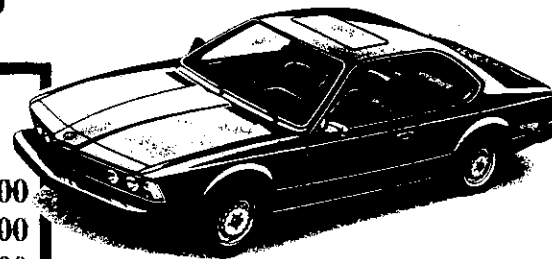
Patricia Auto Sales & Service Ltd

Hwy 599, Box 349 Pickle Lake, Ontario P0V 3A0

Phone (807) 928-2589

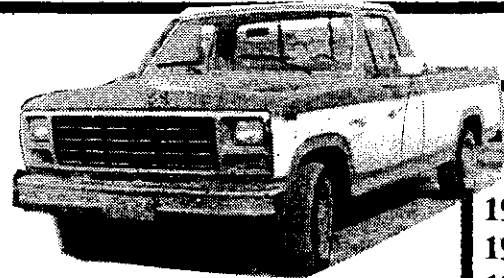
USED CAR LIST

1988 Chevrolet Beretta - 2 door Blue, auto	\$ 7,999.00
1987 Pontiac Grand Am - 2 door, Red, auto	\$ 7,700.00
1986 Oldsmobile Delta - 2 door, Burgundy, auto	\$ 8,495.00
1985 Pontiac Firebird - 2 door, Red, auto	\$ 5,995.00
1985 Mercury Capri - 2 door, Black, auto	\$ 4,495.00
1984 Chevrolet Celebrity - 4 door, Blue, auto	\$ 4,995.00
1984 Acadian - 4 door, Brown, auto	\$ 2,995.00
1982 Lincoln Continental - 4 door, Burgundy, auto	\$ 4,795.00
1981 Oldsmobile 98 - 4 door, Green, auto	\$ 4,495.00
1981 Oldsmobile Cutlass - 4 door, Green, auto	\$ 2,995.00



Vehicles Illustrated Are Not Vehicles Listed

**Come In And Inspect
Our Full Line Of Top
Quality Used Vehicles**



USED TRUCK LIST

1989 Ford F100, Brown, auto	\$ 7,595.00
1989 GMC 1500, Black & Grey, auto	\$ 8,900.00
1988 Ford F100, Black, auto	\$ 7,295.00
1988 Chevrolet Suburban - 4 door, Blue, auto	\$10,500.00
1987 Ranger 4X4, 2 door, Black & Grey, auto	\$ 6,995.00
1986 Ford F100, Grey, Auto	\$ 3,900.00
1986 GMC S-15, 4X4, Blue, auto	\$ 7,500.00
1984 Chevrolet S-10, Brown, auto	\$ 4,800.00
1981 Chevrolet 1/2-Ton, 4X4, Blue, auto	\$ 4,995.00
1981 Dodge Ram 1/2-Ton, Brown, Std Trans	\$ 4,495.00

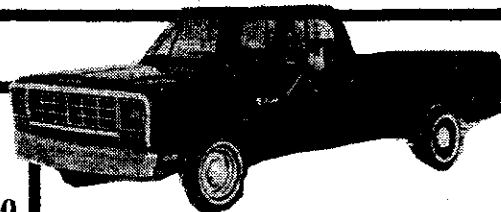
Vehicles Illustrated Are Not Vehicles Listed

**Call Today For Full
Details**

928-2589

AS IS

1981 Oldsmobile Delta 88, White, auto	\$ 2,200.00
1981 Bronco 4X4, Camouflage, Std	\$ 2,900.00
1980 Chevrolet 3/4-Ton, Black & Grey, auto	\$ 2,900.00
1980 Mercury Futura, Black & Grey, auto	\$ 2,100.00
1978 Blazer 4X4, Grey, auto, w/snowblade	\$ 4,400.00
1978 Ford F150 S-Cab, Grey, auto	\$ 2,700.00
1978 Ford F 100, Brown, auto	\$ 2,200.00
1978 Ford S-Cab, Green, auto	\$ 2,495.00
1977 Chevrolet Crewcab, 3/4-Ton, Green, auto	\$ 2,600.00
1977 Ford Stationwagon, Red, auto	\$ 1,995.00



Vehicles Illustrated Are Not Vehicles Listed

**Tell Us You
Saw The Ad In
The Shopper!**

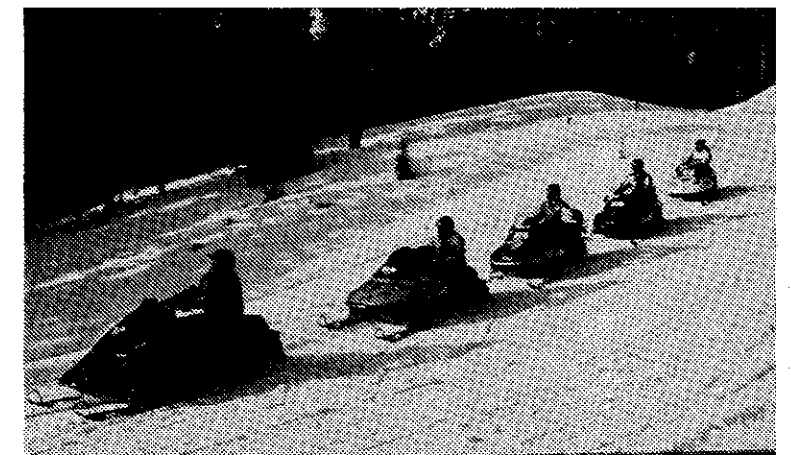
Winter Fun Starts At Patricia Auto

Your Authorized Ski-Doo Dealer In Pickle Lake

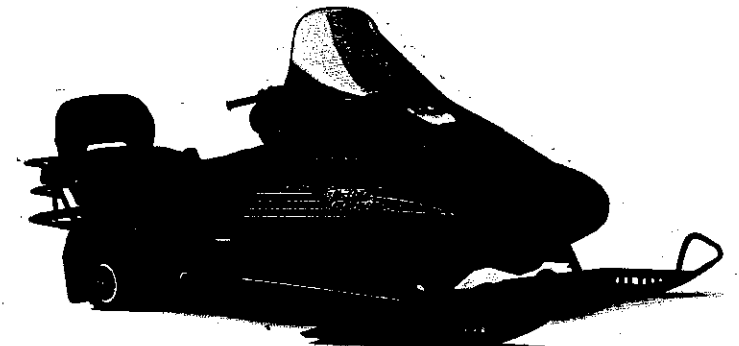


**LOOK
HOT!**

If you want to look as hot as your new Ski-Doo Snowmobile, make sure you're wearing Ski-Doo Sno-Gear. Choose from a full selection of fashionable, high quality one and two piece suits, jackets, pants, bibs, boots, you name it!



Ride In Style!



FORMULA GRAND TOURING

Luxury Accommodation With Vroom Service

Come in to Patricia Auto today and see the sled with the ultimate combination of luxury, comfort and power.

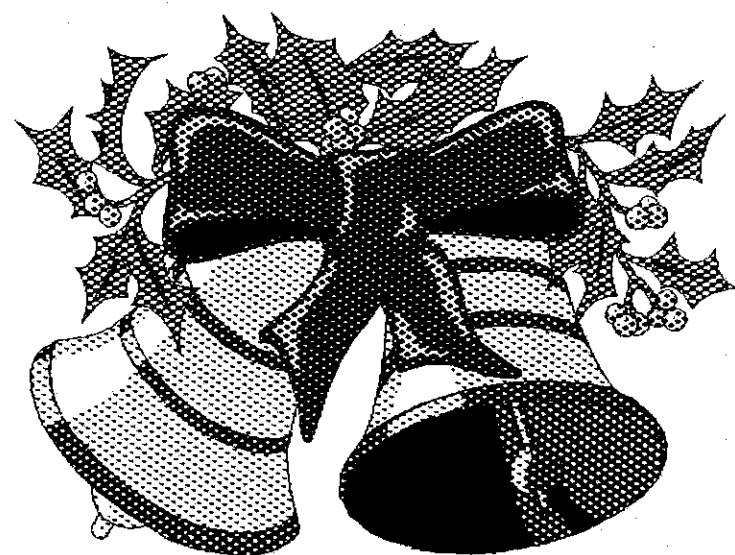
Patricia Auto Sales & Service



Dave Halteman
Pickle Lake

928-2589





SEASONS GREETINGS

From The
REEVE
COUNCIL
AND
STAFF

THE TOWNSHIP OF PICKLE LAKE

Grab-A-Cab

Pickle Lake, Ontario



928-2273

24 Hr

Taxi & Van
Service

***Van Rentals**

Special Rates For Long
Distance Trips For Groups
& Hockey Teams Call And
Inquire About Rates

CHRISTMAS SPECIAL Sioux Lookout Trips

Bring This Ad and Receive \$50 Voucher on Van Trips /\$20 Voucher
On Taxi Trips ...Valid To December 31st 1992

Mr Trapper - Fur Buyer

Call Us First Before Selling Your Fur

24 Hr / 7 Days A Week

Prices Consistent With The Interna-
tional Auctions

George Johnston
Pickle Lake, Ontario

928-2273

1 Free Conabear Trap For Every 10
Furs Sold (Valid To December 31st
1992)

928-2273 North-Rite Sales & Expediting 928-2273

Dealing In Used Furniture, Appliances, Equipment, Machinery, Snowmobiles, Boats & Motors.
Anything You Need - If We don't Have It - We Can Get It! Agents For Atlas Van Lines

2 SE 700 A Suzuki Generators, 120 volts - \$550 Each
1 Health Care Elite VX1550 Exercise Bike - \$100
1 Singer Sewing Machine manual New - \$225
1 Brentwood 30" elec, Kitchen Stove, Almond - \$320
1 Danby 4.5 cu ft bar fridge - \$100
1 Kenmore, automatic, 3 cycle, portable dishwasher - \$280

As Is Vehicles

1 1984 Mercury Lynx, 4 door - \$800
1 1984 Chev Celebrity, 2 door - \$1,000
1 1987 Ford Crown Victoria, 4 door - \$2,000
1 1983 Olds Toronado, 2 door - \$2,000

1 1986 Chevrolet Caprice 350, 4 door - \$5,500
1 1986 Ford Crown Vic Station Wagon - \$2,995
1 1988 Dodge Diplomat, 4 Dr, 318 A.T., P.S., P.B., - \$5,495
1 1989 Ford Crown Vic, 4 Dr, \$6,850
1 1990 Ski-Doo Tundra Long Track - \$3,000
1 1990 Cheyenne with reverse - \$4,200
1 1991 Long Track Tundra, hand warmers - \$3,150
1 Double SkiDoo Trailer - \$600
1 Totem Deep Sleigh, 6' Long - \$200
1 1988 8hp Merc & 14' Starcraft Alum Boat - \$1,500
1 1988 Bayliner Elite 1750, 130 HP Inbd/outbd/Stereo
/ Fish Finder, Cover, Heavy Duty Trailer - \$11,000
1 1990 15 HP Suzuki / 14' Misty River, Swivel Seats \$2,950



Winston Motor Hotel

P O Box 298
Pickle Lake, Ont
P0V 3A0
Phone (807) 928-2390
Fax (807) 928-2877

ATTENTION

TRUCKERS & WINTER ROAD FREIGHTERS -

Check Out Our Spacious
Parking Area Especially
set aside for tractor/
trailer units and machin-
ery parking



Located on the Lakeshore Of Pickle Lake -
All Ski-Doo Trails Lead To The Winston Motor Hotel!

In Downtown Pickle Lake

- * 28 Newly Renovated, Air Conditioned Rooms
- * Good Affordable Rates
- * Banquet & Meeting Facilities
- * Color Cable T.V.
- * Licenced Family Restaurant, With Home Cooked Meals
and Friendly Service
- * Fully Licenced Lounge Overlooking Pickle Lake
- * Free Airport Transportation
- * Free Parking & Plug-ins
- * Credit Cards Accepted Mastercard, Visa, Amx

Family Owned Business
The Roch Families

Ed, Agnes, Mike & Jossette Hope To See You Over The Holidays!
928-2390 For Reservations

Seasons Greetings To All Our Friends And Customers



We deeply appreciate your
business and your friendship,
and we warmly wish you all
the joys of the season.

Andy & Gen Swartman
Tom Meilleur
And all the Staff

Gold Belt Air Transport

P O Box 89 Pickle Lake, Ontario P0V 3A0
Phone (807) 928-2251 Fax (807) 928-2663

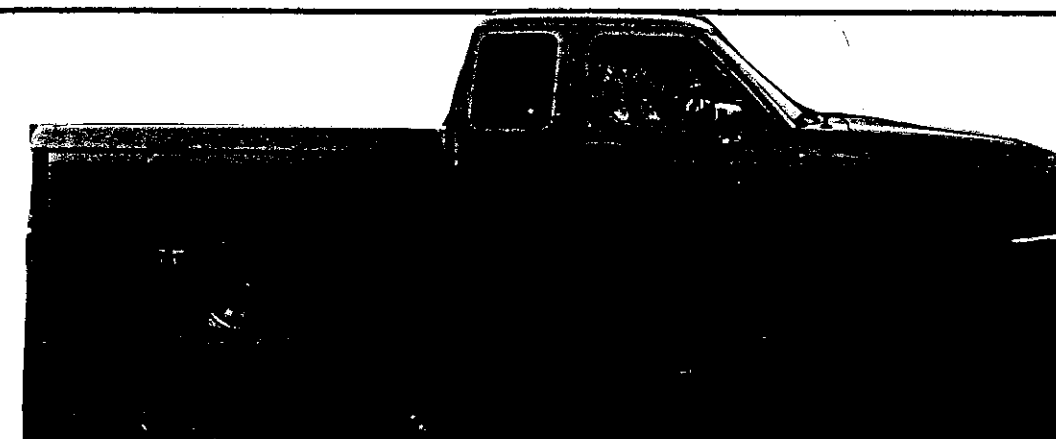
Located In Pickle Lake

For Sale

Will Fit In Sky Van

1990 Ford Ranger XLT

60,000 KM 40,000 km Full Warranty Left, Extended Cab, Fully Loaded, Stereo



Call Phil At 928-2285 Pickle Lake

THE **Now** Tote-a-meal®

- * Chicken
- * Coleslaw
- * Ribs
- * Sandwiches
- * French Fries

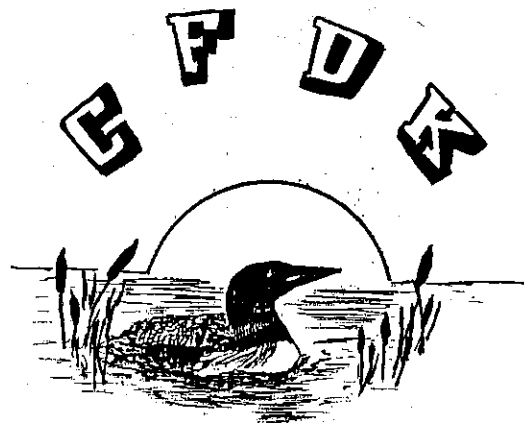


Call Ahead - Have Your Food Waiting For You!

Call 928-2583

PICKLE LAKE

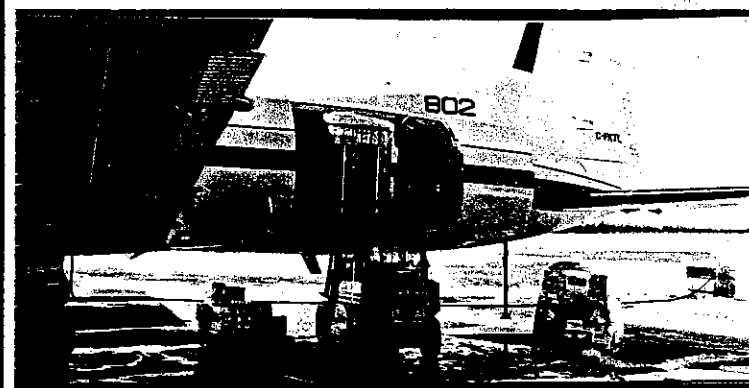
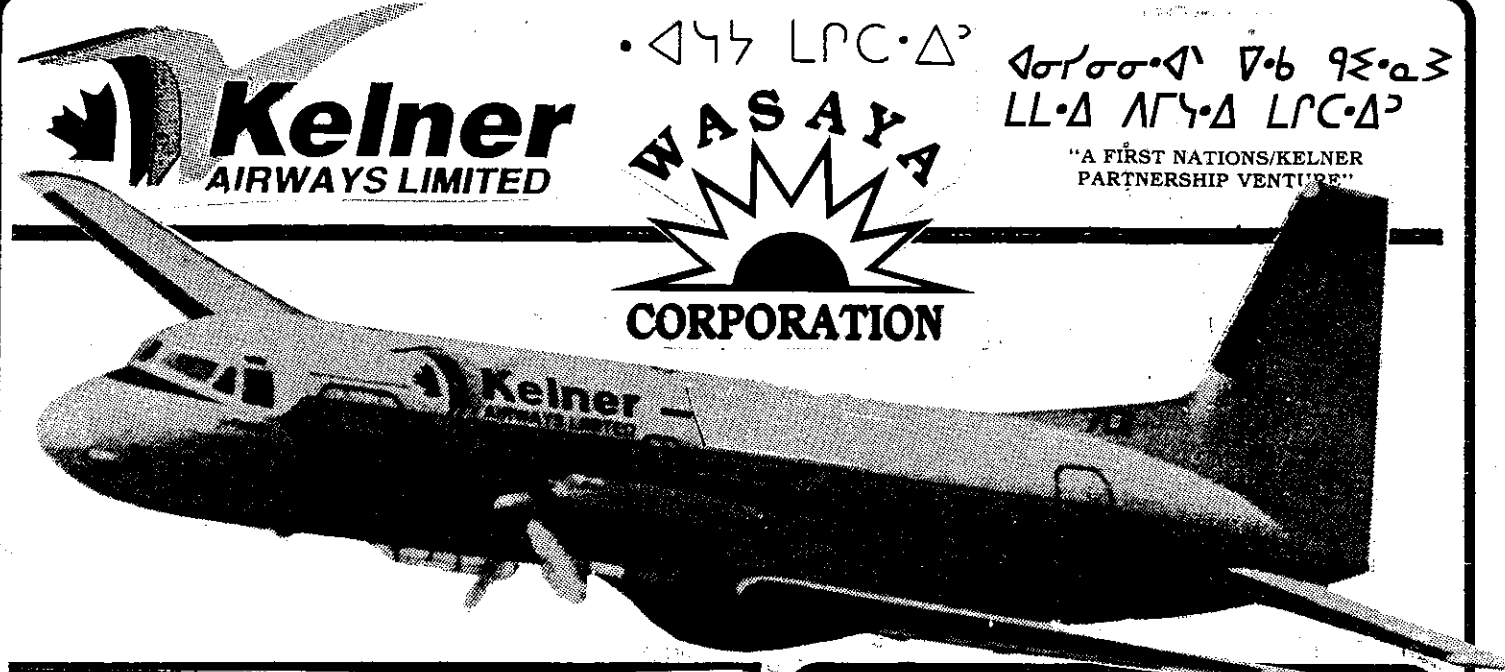
When In Pickle Lake
Tune In To 98.5 FM C F D K Radio



"The Voice Of The Deep, Deep, Dark Woods"

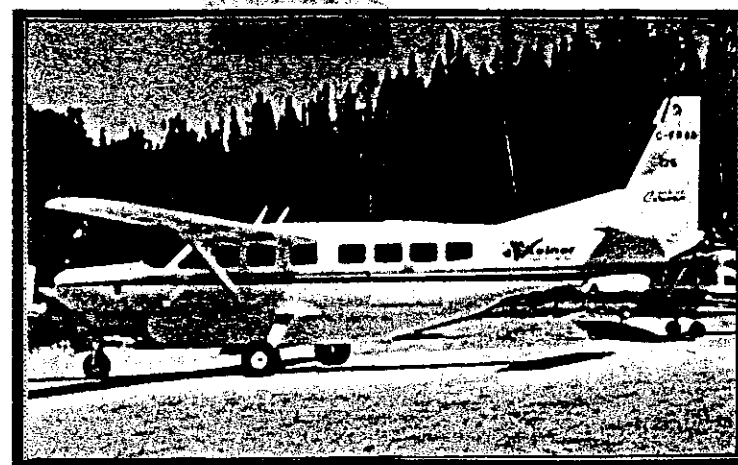
We Play The Best Of Music

Call Us Today For Complete Details On A Comprehensive Radio Advertising Campaign - You Will Find Our Rates Very Reasonable
Phone (807) 928-2699 Or Write Us At
CFDK Radio, P O Box 533
Pickle Lake, Ontario P0V 3A0



Hawker Siddeley 748

- * 12,000 lb Cargo
- * Large Cargo Door
- * Bulk Fuel & Freight



Cessna Grand Caravan

- * 9 Passenger
- * 3,000 lb Cargo
- * Bulk Fuel & Freight



Passenger, Cargo & Bulk Fuel
Services

**Call Us First, For
The Best Bulk Fuel
Prices**

For Fuel & Charter Information
Contact Bob Delisle or Cathy Cook
- 928-2244

For Freight Information, Contact
Glenn Lesard - 928-2244

V Kelner Airways Ltd

P O Box 308

Pickle Lake, Ontario P0V 3A0

Phone - 928-2244

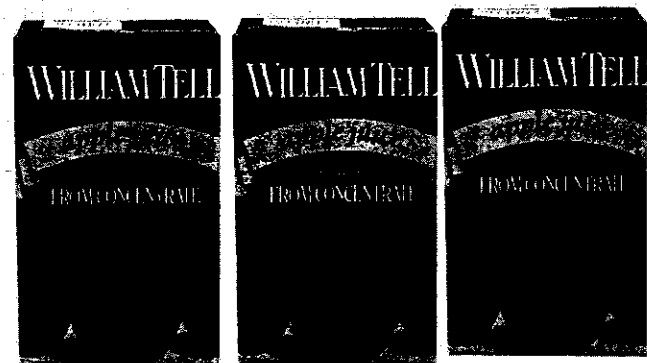
Fax - 928-2595

CHRISTMAS STOCK-UP

Our great
Christmas Contest
has started!
See local Northern
store for full details!



Personal Shopping Only. Prices effective until closing Saturday, December 5, 1992.



Apple Juice

William Tell,
1 Litre

Case of 12

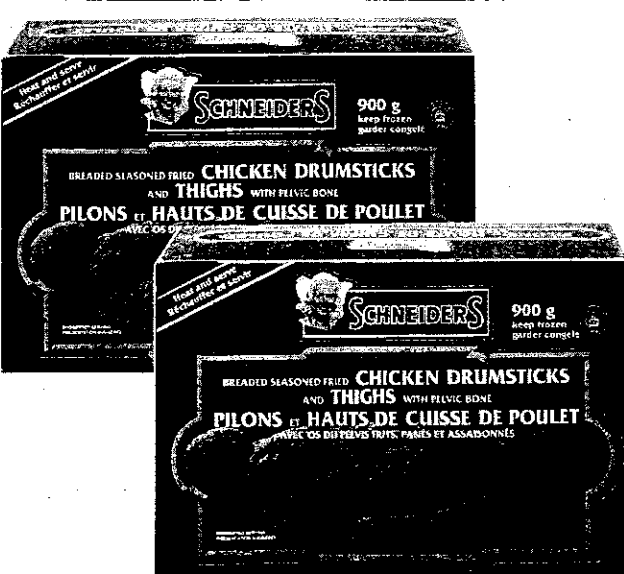
10⁴⁹



Bananas

From the Tropics,
Golden Yellow

3⁹⁹
lbs For
.73/kg



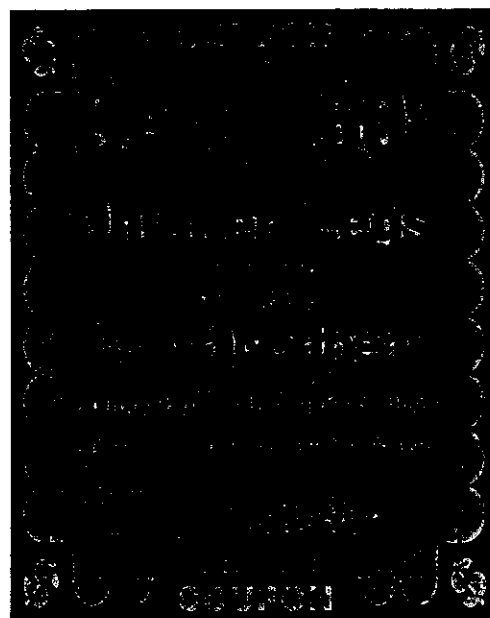
**Chicken
Legs**

Schneiders,
Box, 900 g

\$4.49 Without Coupon

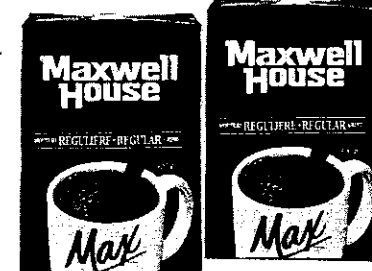
Each

3⁹⁹
With
Coupon



Northern
Customer Service is Our Priority

WE GUARANTEE The Best Service!
We are committed to offering you
the best in customer service.
If you're not satisfied, we're not satisfied.



Ground Coffee

Maxwell House, Regular,
Fine or Extra Fine
Grind, 300 g

ea.

1⁹⁹
Save more
with above
coupon
offer!



**Graham
Wafers**

Honey Maid, 400 g
\$1.99 Without Coupon

ea.

1⁴⁹
With
Coupon



Layer Cakes

Pepperidge Farm,
Chocolate, Vanilla or
Banana, 225 g

ea.

1⁷⁵
Save more
with above
coupon
offer!

Le Menu Dinners

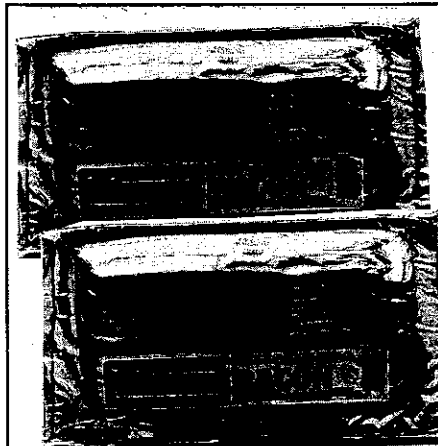
Selected Varieties, 300-320 g

3.89

Egg Rolls

Wong Wing, Shrimp or Meat,
567 g

3.59



**Schneiders
Bacon**

Sliced Side,
Regular, 500 g
ea.

2⁶⁹

Lunchmates

Schneiders Lifestyle

Assorted Varieties, 106 g

1⁸⁹

Slim Sticks

Schneiders, Pepperoni or

Salami, 250 g

2⁷⁹

Mozzarella

Schneiders

Low Fat

2⁷⁹

Salami

Schneiders Blue Label

Fresh Sliced

.85

.97

Quality Meats

**Top Round
Steak**

Cut From Canada
Grade A Beef, Boneless
6.37/Kg

2⁸⁹
/lb

**Rump
Roast**

Cut From Canada
Grade A Beef, Boneless
5.93 / Kg

2⁶⁹
/lb

**Pork Butt
Roast**

Fresh, Boneless

3.28 /Kg

1⁴⁹
/lb

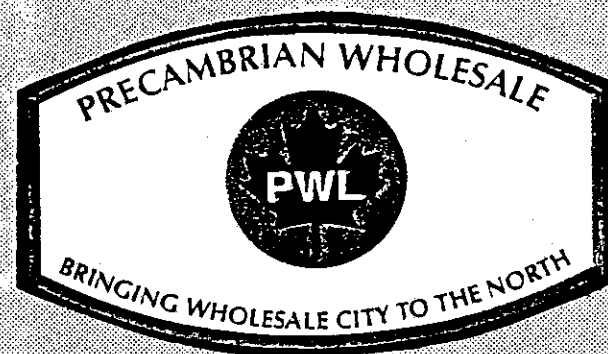
**Pork
Riblets**

Fresh

1.26 / Kg

.57
/lb

HEAD OFFICE
 1169 Sherwin Road
 Winnipeg, Man R3H 0V1
 Phone (204) 694-1988
 Toll Free 1-800-665-5491
 Fax (204) 694-7224
 Toll Free Fax 1-800-665-4223



BRANCH OFFICE
 P.O. Box 337
 Pickle Lake, Ont P0V 3A0
 Lot #SN6 Hwy #599 South
 Phone (807) 928-2013
 Toll Free 1-800-665-7788
 Fax (807) 928-2703
 Toll Free Fax 1-800-561-3330

SPECIALS DECEMBER 1 - 11th 1992

Robin Hood Flour 2/10 KG Paper Bag	\$ 12.99 Bale	Nemco 10/30 Super Duty Motor Oil 12/1 L	\$ 20.99 Cs
Redpath Sugar 10/2 KG	\$ 15.31 Bale	Propane 100 Lb + Exchange	\$ 36.95 Ea
Tenderflake Lard 36/454 G	\$ 45.72 Cs	Totem Sleds 4' /*Deep	\$288.00 Ea
Chicken Legs Tray Pk 8 KG Case	\$ 1.39 Lb	6' /*Deep	\$359.95 Ea
Pork Chops Tray Pk 8 KG Case	\$ 1.99 Lb	8' /*Deep	\$405.95 Ea
Aylmer Tomato Soup 48/284 MI	\$ 27.65 Cs	7' /*Shallow	\$299.95 Ea
Libby's Pork&Beans 24/398 MI	\$ 23.75 Cs		

YAMAHA SNOW MOBILES

YOUR NORTHERN SUPPLIER OF

Groceries

Wholesale Groceries
 Retail/Institutional Sizes
 Fresh & Frozen Quality Meats
 Fresh Produce
 Coca Cola & Pepsi Cola
 Hostess Frito-Lay
 Vacationland & Manco
 Dairy Distributor
 Cube, Block & Dry Ice
 Confectionary
 Cigarettes and Tobacco

Hardware/Misc

Appliances Furniture
 Fax, Computer & Photocopier Paper
 Stationery Supplies
 Propane Outlet
 Oil Products
 Fuel Tanks/Pumps & Fittings
 H/D Wagons for Freight or Fuel

Sporting Goods

Ammunition
 Guns
 Canoes
 Duck Boats
 Snowshoes

Building Supplies

Complete Line of Construction & Building Supplies
 Prefab Trusses
 Vinyl/Steel Siding
 Treated Lumber
 Dimensional Lumber
 Plywoods Culverts
 Redi-Mix Concrete
 Cement
 Hardware Nails
 Roofing Supplies

Totem Sleds
 Traps
 Snare Wire
 Hockey Sticks
 Pucks
 Tape

Mining Supplies

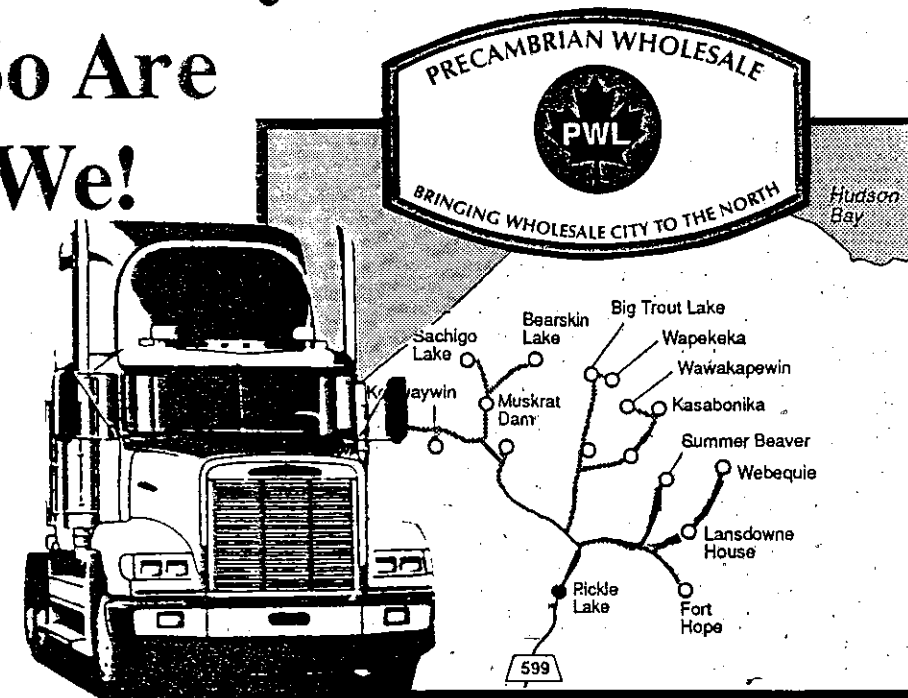
Drill Mud
 Cement Normal Portland By The Bag or Bulk
 Manufacturer of Bulk Cement Silos
 Steel Fabrication
 BQ/NQ Core Boxes
 Blasting Poles
 Track Spikes
 Directory Boards and Signs
 Chalkboards
 Bulletin Boards
 Sign Painting
 Safety Supplies
 Cleaning Supplies
 Safety Coveralls
 Rough Spruce
 Timber All Sizes
 Propane Depot
 Welding Gases
 We Guarantee The Quality Of Our Core Boxes

A Complete Line Of Construction Rental Equipment

Our Pledge Of Freshness and Quality

We can assure all our customers of a consistent high standard of freshness and quality in all our produce, milk, meats and bread. Our bread arrives in Pickle Lake the day after it is baked - Our milk arrives in Pickle Lake the day after it leaves the dairy. Meat and Produce is also the freshest product available. Our trucks deliver to Pickle Lake twice a week - Thursday and Saturday, assuring you a constant supply of fresh products.

When The Winter Roads Are Ready ----- -- So Are We!

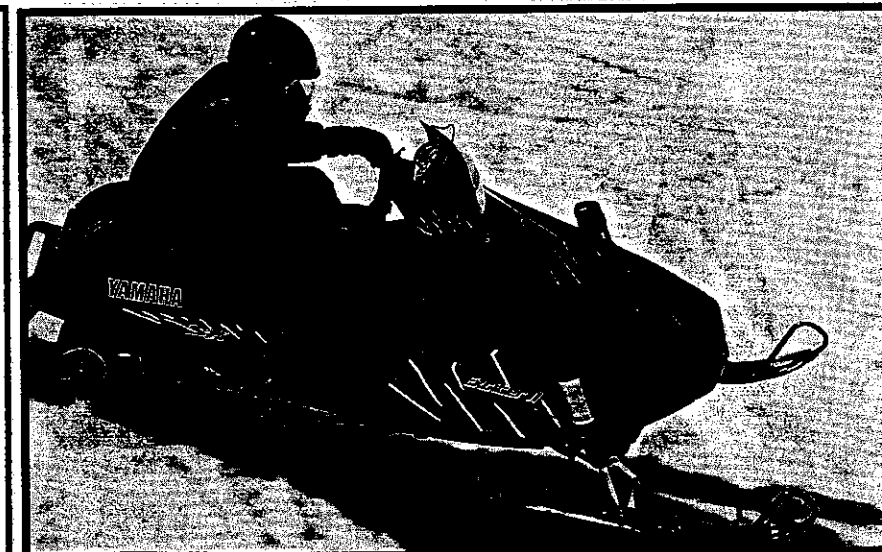


We're Ready With Truck Loads Of Quality Groceries, Fresh Meats, Milk, Produce and Oven Fresh Bread....And We're Ready To Transport It Direct To Communities Served By Winter Roads!

Call Now To Book Your Orders

YAMAHA SNOW MACHINES

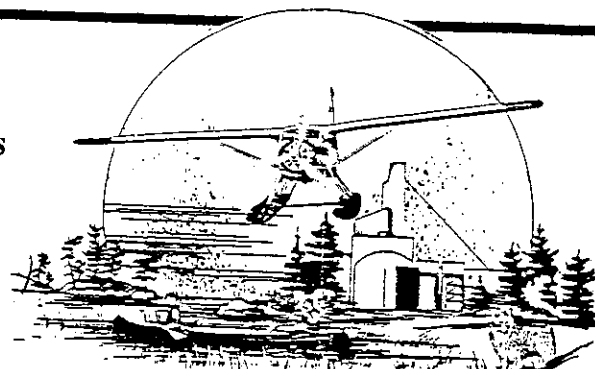
DESCRIPTION	WEIGHT	PRICE
V Max - 4	565	\$10,099.00
Exciter II SX	496	\$ 7,429.00
Exciter II LE	479	\$ 7,139.00
Exciter II ST	507	\$ 7,139.00
Phazer II LE	432	\$ 6,089.00
Phazer II ST	421	\$ 6,079.00
Venture XL	472	\$ 6,849.00
Venture LongTrack	518	\$ 7,320.00
Venture GT	461	\$ 5,880.00
VK 540 II	606	\$ 8,010.00
Enticer	465	\$ 5,939.00
Ovation LE	390	\$ 4,849.00
Bravo Transporter	325	\$ 3,229.00
Bravo	300	\$ 2,849.00
Bravo LongTrack	386	\$ 3,589.00



Precambrian Wholesale

P.O. Box 337
 Pickle Lake, Ontario
 (807) 928-2013 Fax (807) 928-2703
 Toll Free 1-800-665-7788
 Toll Free Fax 1-800-561-3330

Open 7 Days Per Week
 7:00 A.M. - 10:00 P.M.
 Manager - Anna-Marie Preuss
 Our Friendly Manager and
 Staff Would Like To Wel-
 come All Our Friends and
 Neighbours From Central
 Patricia, Northern Commu-
 nities, Osnaburgh House and
 Pickle Lake To Shop and Save
 At Our Well Stocked Store
 Which Features Such Items
 As:



FRONTIER MINI-MART
PICKLE LAKE
"Ontario's Last Frontier"

P O Box 425
 Pickle Lake, Ont
 P0V 3A0

Phone 928-2020
 Fax 928-2300
 Located Highway
 #599 North In
 Central Patricia

- | | | |
|--------------------------------------|---|-------------------------------------|
| * Fresh Produce | * Delhi Sandwiches | * Petroleum Products |
| * Groceries | * Ice Cream & Novelties | * Movie & Nintendo |
| * Meats | * Pucks, Hockey Tape & Sticks | Rentals |
| * Fresh Milk & By Prod ucts | * Superior Automotive and Bulk Propane Outlet | * Instant Scratch & Win Centre |
| * Fresh Weston's Bread & Pastry | * Gasoline | * Magazines |
| * Hostess & Old Dutch Chips & Snacks | * Diesel | * Newspaper |
| | | * Dealer For Totem Snowmobile Sleds |

NEW NEW NEW

NEW LOTTO 649 CENTRE WILL BE ESTABLISHED HERE WITHIN APROXIMATELY EIGHT WEEKS FROM PUBLISHING DATE OF THIS PAPER!

Come In And Check Out All Our Latest Improvements

- * New Frozen Food Center
- * All New Produce Center
- * Film Development Center

Agents For
Scooter's

- * New Movie & Nintendo Center
- With close to 1800 assorted movies and
 Nintendos to choose from

FREE GASOLINE COUPON

\$2.00 off with minimum of 35L purchase
 of Gasoline or Diesel

This coupon cannot be combined with any other offer
 Valid November 17th to December 31st 1992
 With the use of this coupon, your name will be entered for
 100 L Free Gas. Draw On January 1st 1992

Name _____

Phone _____ Licence _____

Signature _____

FREE GASOLINE COUPON

\$2.00 off with minimum of 35L purchase
 of Gasoline or Diesel

This coupon cannot be combined with any other offer
 Valid November 17th to December 31st 1992
 With the use of this coupon, your name will be entered for
 100 L Free Gas. Draw On January 1st 1992

Name _____

Phone _____ Licence _____

Signature _____



Northland Petroleum Ltd.

Serving Northwestern Ontario

Suppliers of

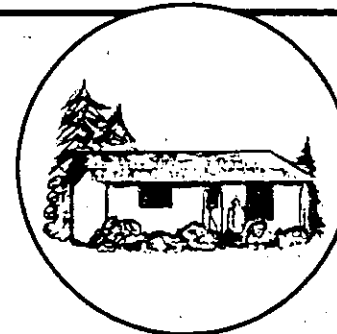
PROPANE, COMMERCIAL FUEL, GASOLINE
cased goods of oil, naphtha, kerosene etc.

Toll Free

1-800-461-2299

Frank Summers, Manager
 Box 307 Pickle Lake, Ont.
 P0V 3A0

928-2317



WAHKAHEKUN

BUILDING SUPPLIES

FOR ALL YOUR BUILDING MATERIALS

AND MECHANICAL EQUIPMENT

Specialists In All Types Of New Buildings And Renovations

- | | | |
|--------------|-------------------|-----------|
| * Housing | * Stores | * Offices |
| * Churches | * Community Halls | * Garages |
| * Warehouses | * Gymnasiums | * Camps |

The First Building Supplier With A Rebate Program To Northern Communities

Contact Bob Topp Or Dick Dennis At: 1755 Dugald Road Winnipeg, Manitoba R2J 0H3
 Phone (204) 654-2622 Fax (204) 654-2958

Pricing Available Delivered To Community

SPECIALISTS IN SERVING FIRST NATION COMMUNITIES



SAVE! SAVE! SAVE!

Our 1993 Outboards Are Here!

**BUY NOW
And
SAVE BIG BUCK\$!**

**Wouldn't Dad Love An
Outboard Under The Tree!!!**

**20% Off For The
Month Of
December**

**Generators
Water Pumps**

1993 Specials Available Now

MODEL	LIST	SPECIAL	MODEL	LIST	SPECIAL
Jag 440	\$5149	\$4737	EXT 580 Z	\$7639	\$6849
Jag 440 Z	\$5619	\$5143	PANTERA 550 EFI	\$8029	\$7207
Jag AFS LT 2 Speed	\$6709	\$6079	WILDCAT 700	\$8419	\$7548
EXT 550	\$6879	\$6183	Other Machines Available On Order		

ARCTIC CAT

WORLD CLASS SNOWMOBILES
AND ACCESSORIES

The best snowmobiling equipment in the world to give you
the best snowmobiling experience in the world.

Arcticwear® - stylish,
functional snowmobile
clothing to keep you
warm & comfortable.



Authorized Dealer
Parts & Service

Lakeside Enterprises Ltd

P O Box 306
PICKLE LAKE,
ONT P0V 3A0

928-2051

FAX 928-2055

Planning On Cutting Some Wood This Winter?

Before You
Buy A Saw
Anywhere
Else - Check
Out The
Savings At
Lakeside
Enterprises!



Look At These GREAT PRICES
On North America's Top Selling
and Top Performing Saw -

0.21	14" Bar	\$324.95
0.21	16" Bar	\$329.95
0.23	14" Bar	\$354.95
0.23	16" Bar	\$359.95
0.25	14" Bar	\$394.95
0.25	16" Bar	\$399.95
0.24	16" Bar	\$469.95
0.26	16" Bar	\$529.95
0.26	18" Bar	\$534.95
0.34	16" Bar	\$569.95
0.34	18" Bar	\$574.95

For Month of December

0.21 - 0.25 - \$50 Off + Free Kit
0.24 - 0.26 - \$75 Off + Free Kit

FREE* STIHL® WOOD-PRO KIT

- KIT INCLUDES:
- Oilomatic® Replacement Chain Loop
 - 10 Litre Fuel Container with Stop-Flow Spout
 - 250 ml Engine Oil Mix
 - 1 Litre Chain Oil
 - Chain Sharpening File with Handle
 - Coleman® Cooler
 - STIHL Cap
 - Sharp Advice® Filing Manual
 - Valuable STIHL Coupons



Lakeside Enterprises Ltd
P O Box 306 Pickle Lake, Ont P0V 3A0
Phone (807) 928-2051 Fax 928-2055

Business & Service Directory

You can expect the world from us

You'll enjoy the personal service and attention to every detail of your travel plans because you're dealing with an Independent Travel Professional.

As a member of the ITP group you can count on competitive travel opportunities, new destinations and sound travel advice. But the best benefit is that you can relax and enjoy your holidays to the fullest without concerns or worry - because we look after you.

Your ITP agent is knowledgeable about everything from departure dates to destinations, from sunny seashores to ski slopes and passports to packing, to help you plan a memorable holiday.

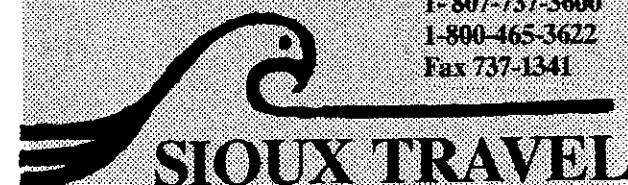
Call us now. Get the details on these special destinations.

You can indeed expect the world from us!

1-807-737-3600

1-800-465-3622

Fax 737-1341



Sioux Travel Offers

- Exciting Cruise Packages.
 - Travel Insurance Services
 - Fully Qualified Corporate Travel Services
 - Discounts on 14,000 Hotels Worldwide
 - Discounts on Major Car Rental Services
- We Sell All Holidays
Advertised in the Saturday Free Press Travel Section.

Box 457, 65 King St
Sioux Lookout, Ont.
P0V 2T0

MERV McDONALD CONTRACTING

Washagamis Bay Reserve
P O Box 625
Keewatin, Ontario
P0X 1C0

Specializing In Northern &
Native Community
Construction



Phone For Quotes
(807) 548-1490
Fax (807) 548-1492

SEASONS GREETINGS

From

SPARKY AND SONS
MOBILE WELDING

BEST OF WISHES

DEAN & HELLEN



For All Your Welding Needs, Call Us 928-2512

PHOTO FINISHING CENTER

Sooter's

The Frontier Mini-Mart Is
Pleased to Announce that
They are agents for
Sooters Photo Finishing

Drop Your Film Off At Fron-
tier Mini-Mart For Fast Effi-
cient Photo Finishing.
928-2020

Business & Service Directory

PICKETT'S

PIZZA & RESTAURANT
PICK-UP or DELIVERY
 We Deliver To All Northern
 Communities
 Call 928-2337 Pickle Lake
 \$2.00 Off With Coupon

LINDA'S HAIR DESIGN
CUTS PERMS COLOURS
 For The Whole Family
 Call 928-2337 Pickle Lake
 WE WILL COME TO YOU!



CARTER RICE



Glen Welwood
Bulk Plant Manager
Pickle Lake

BULK CASE LOTS
MOTOR OILS
GEAR OIL
GASOLINE
COMMERCIAL FUEL
Pickle Lake, Ontario
(807) 928-2261
Fax 928-2970



L.T. L. Contracting Ltd.
 R R 14, Paquette Road P O Box 11
 Thunder Bay, Ontario P7B 5E5

CIVIL CONSTRUCTORS

Complete Sewer and Water
 Services.

Vic Laurin - Vice President

Office: 807 767-4441
Shop: 807 767-8930
Fax: 807 768-0388



LAUNDROMAT

Now Open In Pickle Lake

- Bring Your Laundry
- Bring Your Family
- Bring A Box Of Chicken
 From The Norwin

Make A Day Of It!

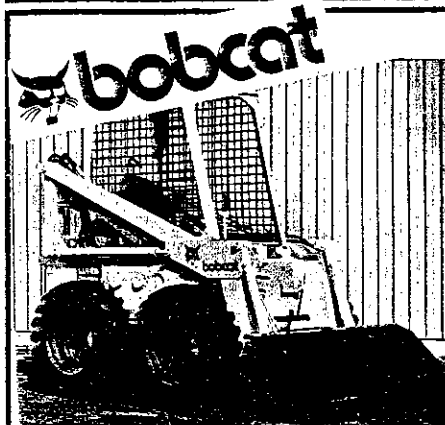
Call Ahead 928-2583
Reserve Your Time Slot

North West Shopper - Classifieds

To Place Buy & Sell Ads Call 928-2286

For Sale

BonTempi Electric Organ.
 Two keyboards -Auto cord; rhythm
 synchro; cord memory; bossa, samba,
 rock, slowrock, swing, waltz, etc. Used
 once (or is it one owner) Asking \$400
 Call 928-2583



For Sale BOBCAT 610

Complete with bucket - Ideal for
 snow removal or hauling small
 loads of sand or gravel/ Lifts half-
 ton loads up to 9 feet. Air cooled
 gasoline engine, 4 cylinder, Clutch
 drive. Can be inspected at Pickle
 Lake Hotel. For details - call Ron
 at 928-2581

Can Be Flown In SkyVan

FOR SALE: 1990 Cheyenne R
and 1991 Tundra Long Track. Very
 low mileage. Includes 1991 double
 wide snowmobile trailer and 6'
 totem sled. In excellent condition.
 Can be seen at 23 Lakeview
 Crescent. Call at 928-2460.
 Priced to sell at \$6,000 firm.

Used Outboards
 We have a large selec-
 tion of used outboard
 motors ranging from 4
 hp up to 20 hp - Mer-
 cury and Suzuki.
 For a complete list and
 price call:

Miminiska Lodge
928-2285

For Sale

1991 EXT SPECIAL
Coil Over Gas Shocks
550 Liquid Twin,
Thumb & Hand
Warmers, Full Gauges
928-2598

Ask For Mike
 If No Answer Call Phil at
 928-2285



North-Rite Sales

- 2 SE 700 A Suzuki Generators, 120 volts
 -\$550 Each
- 1 Health Care Elite VX1550 Exercise
 Bike - \$100
- 1 Singer Sewing Machine manual New -
 \$225
- 1 Brentwood 30" Electric Kitchen Stove,
 Almond - \$320
- 1 Danby 4.5 Cu Ft Bar Fridge - \$100
- 1 Kenmore Auto 3 cycle portable dish
 washer - \$280

As Is Vehicles

- 1 1984 Mercury Lynx, 4 Dr - \$800
- 1 1984 Chev Celebrity, 2 Dr - \$1,000
- 1 1987 Ford Crown Victoria, 4 door -
 \$2,000
- 1 1983 Olds Toronado, 2 Dr - \$2,000
- 1 1986 Chev Caprice 350, 4 Dr - \$5,500
- 1 1986 Ford Crown Vic Station Wagon -
 \$2,995
- 1 1988 Dodge Diplomat, 4 Dr, 318,
 A.T., P.S., P.B., - \$5,495
- 1 1989 Ford Crown Vic, 4 Dr - \$6,850
- 1 1990 Ski-Doo Tundra Long Track -
 \$3,000
- 1 1990 Cheyenne with reverse - \$4,200
- 1 1991 Tundra Long Track, Hand Warm-
 ers - \$3,150
- 1 Double SkiDoo Trailer - \$600
- 1 Totem Sleigh, Deep, 6' Long - \$200

- 1 1988 8hp Mercury Outboard & 14'
 Starcraft Aluminum Boat - \$1,500

- 1 1988 Bayliner Elite 1750, 130 HP In-
 board/outboard including Stereo/ Fish
 Finder, Cover, Heavy Duty Trailer -
 \$11,000

- 1 1990 15 HP Suzuki/14' Misty River/
 Swivel Seats - \$2,950

Call

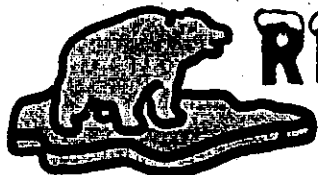
George Johnston

North-Rite Sales & Expediting

Pickle Lake

928-2273

CHEYNE



REFRIGERATION

& Air Conditioning

Commercial & Industrial Sales & Service

- * ICE CUBERS
- * WALK-IN COOLERS
 & FREEZERS

- * ICE FLAKERS
- * AIR CONDITIONING
- * SKATING RINKS
- * CURLING RINKS

DRYDEN

223-4238

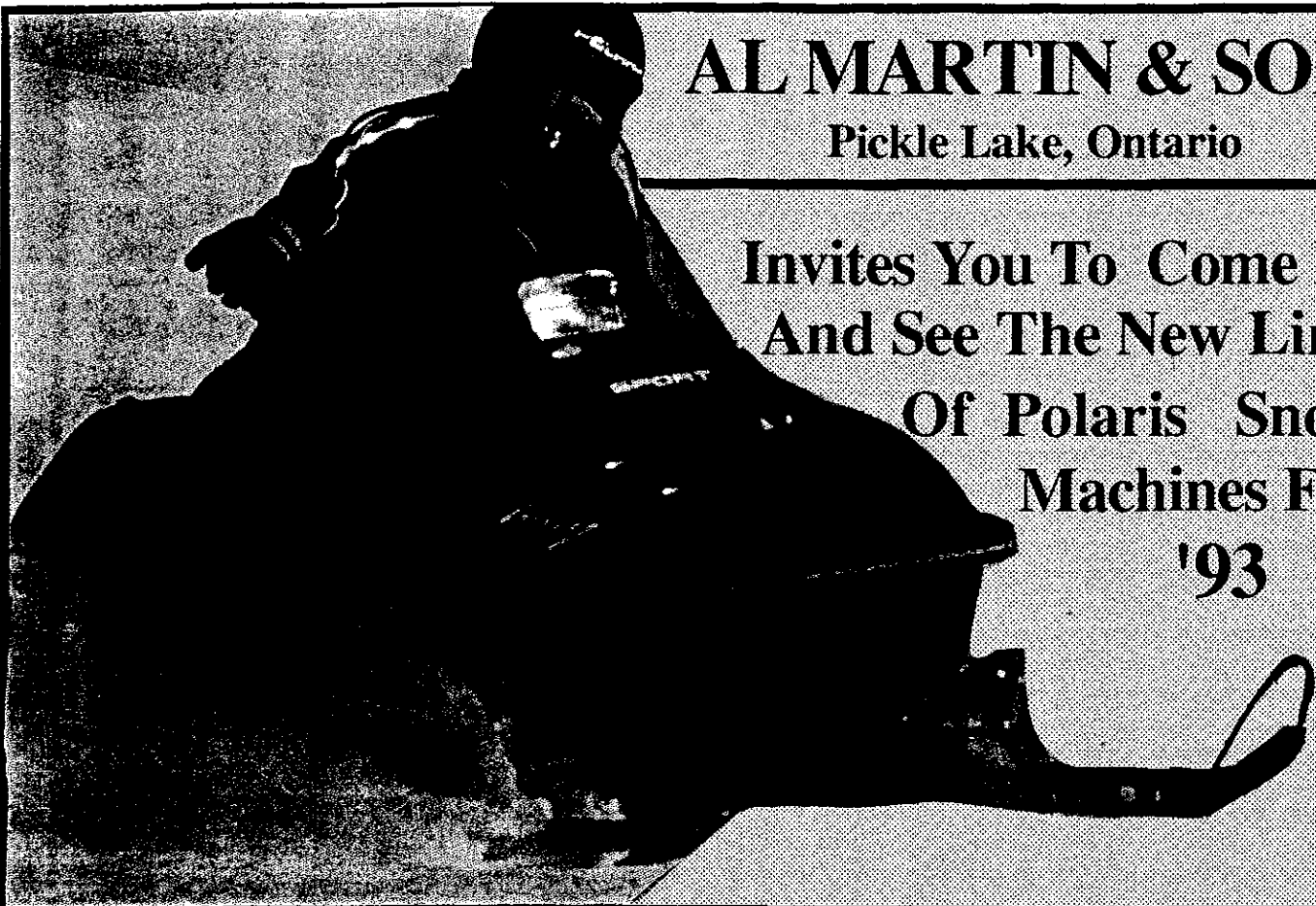
104 VAN HORNE AVE
 P8N 2B5
 SERVING NORTHWESTERN ONTARIO

IF NO ANSWER
 CALL MOBILE OPERATOR
 & ASK FOR YJ6-6085

AL MARTIN & SONS

Pickle Lake, Ontario

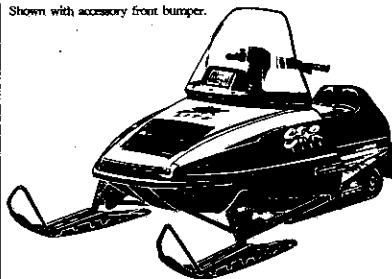
Invites You To Come In
And See The New Line
Of Polaris Snow
Machines For
'93



Most
Sled for
Your
Money.

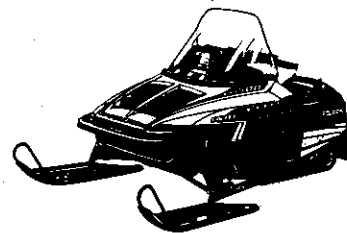
POLARIS
Believe It.

Shown with accessory front bumper.



INDY STARLITE. Want a great start on Winter without spending a great deal of money? Check out the Indy StarLite. Lightweight. Low cost. Easy to handle. With its fan-cooled, 250 powerplant, its new drive train, longer 121" track, and Independent Front Suspension (IFS)—it is the most snowmobile you can buy for the money. Rev one up today.

©1992 Polaris Industries L.P.



Think of it as
a Bullet on Skis.

INDY 500 EFI. One look, and you know this sled is loaded. Its fuel-injected, liquid-cooled, 500 powerplant blows the competition away. And all that white-knuckle power is turned into a smooth-as-silk ride with Independent Front Suspension (IFS) and new Improved Transfer (ITS) rear suspension. Don't wait! Shoot on in instead.

POLARIS
Believe It.

SNOW PLOWING

Al Martin & Sons

CONTRACTING

Hwy 599 P O Box 470 Pickle Lake, Ontario P0V 3A0

Phone 928-2518